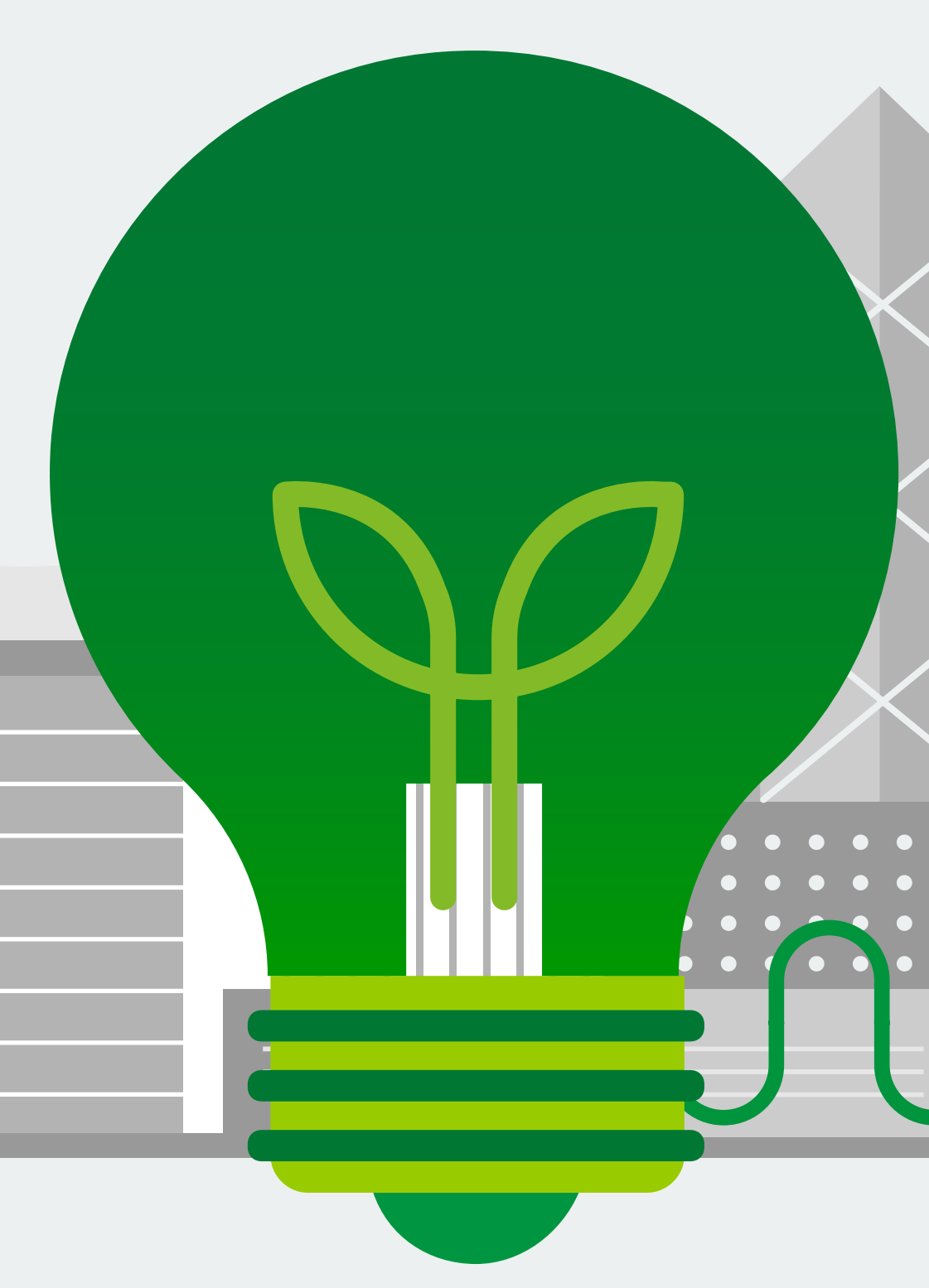


West Nile Delta project

BP's track record in Egypt stretches back some 55 years, with investments of more than \$35 billion, making it one of the largest foreign investors in the country. Here are the facts and figures on its latest major project.



BP and its partners operate across

15,455 km²

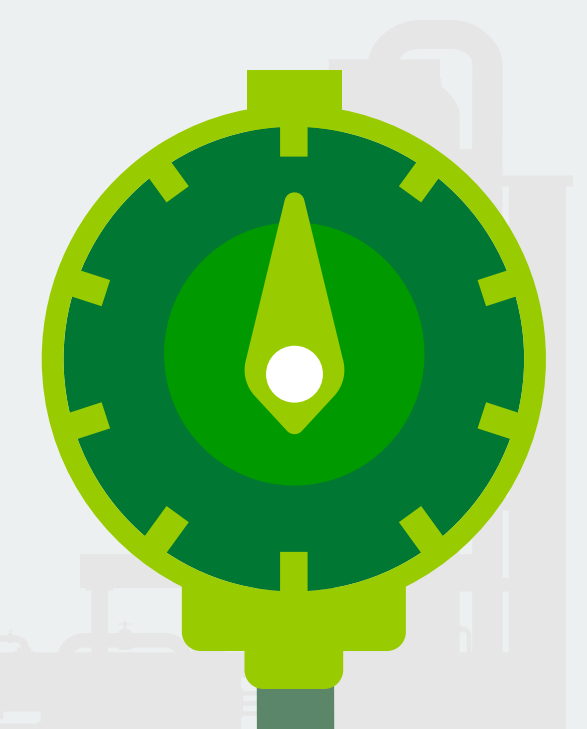
in Egypt, around 3 times the size of Trinidad

The WND development will provide around

1.4 bcf/d*

of gas for Egypt's national grid

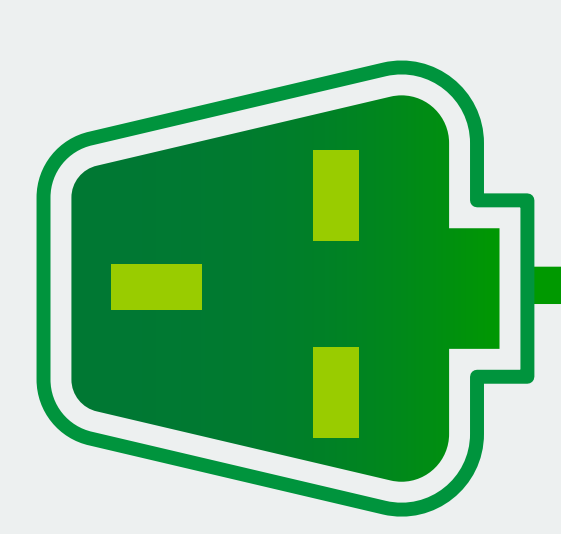
* billion cubic feet a day



West Nile Delta will provide the equivalent of

20%

of Egypt's current gas production



100%

of the gas from the project will be used for the national grid

More than **7,000**

During peak construction, the number of people employed by the West Nile Delta project

West Nile Delta operates in waters of up to

750 m

or two and half Eiffel Towers

x2 1/2

