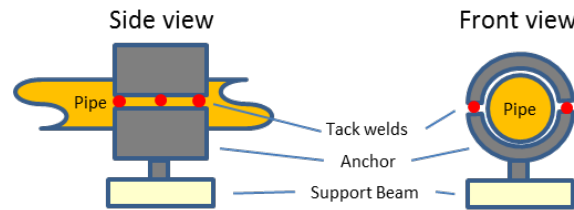


Discussion Guide – Hazards of hot work near live equipment



Instructions: This scenario can be used as a safety moment for any team but is primarily focused on hot work near live equipment. As the facilitator of the discussion, it is recommended that you pass out copies of this discussion guide. Have the team members read the scenario, then you lead the discussion. The objective is to engage your team to explore the hazard and develop actions for your team to reduce the risk.

Scenario
An anchor joint needs to be removed from a pipe. The first step is to cut the tack welds that secure the top half of the anchor housing to the bottom half. The anchor joint is installed on a high-pressure natural gas line at 1500 psi.



Q: How would you remove the tack welds from the anchor joints, and what precautions would you take?

The demonstration below shows one possible method for removing the tack welds with an angle grinder, using a metal plate as a guard to protect the high-pressure natural gas line.

Anchor Joint



Q: What are the process and personal safety hazards of this technique?

Discussion Guide – Hazards of hot work near live equipment



What happened next?

- After cutting several anchor tabs without incident, the crew cut this anchor tab and after removing the guard plate they noticed that they had cut through the guard plate and into the pipeline.
- The cut extended about half way through the 0.25 inch thick pipe.
- Fortunately there was no release of natural gas and the pipeline could be shut down safely for repairs.

Q: How could you make certain that this doesn't happen at your site?

