

List

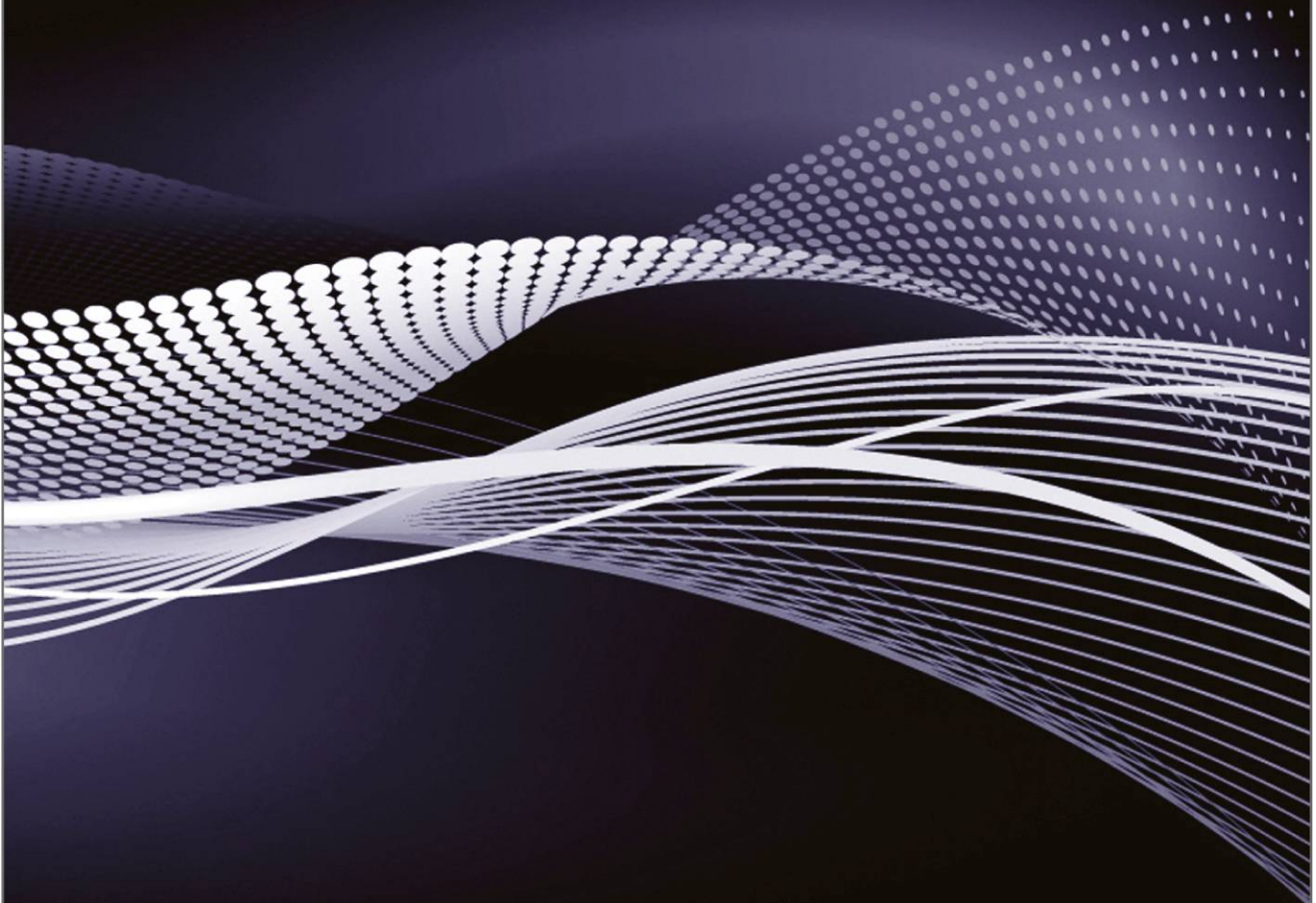
Experience that Delivers



Prepared for: BP Exploration Operating Company Ltd.

DECC Inventory List

January / 2013



Experience that Delivers



Client:
BP EXPLORATION OPERATING COMPANY LTD.

Project Name:
WEST OF SHETLAND QUAD 204 PROJECT EPMS FOR SUBSEA FACILITIES/REDEVELOPMENT AND MODIFICATION

Document Title:
DECC INVENTORY LIST



Document Number:
QD-JP-SS-LST-0002

Document Type:
List

Client Document Number:
QD-JP-SS-LST-0002

Number of pages:
8 + Appendices

J P Kenny Caledonia Limited
Caledonian House
234 Union Street
Aberdeen
AB10 1TN

Tel: +44 (0) 1224 347300
Fax: +44 (0) 1224 347301
<http://www.jpkenney.com>

Rev	Date	Reason for Issue	Prep. By	Chk. By	App. By	QA	Client Approval
C2	17/01/13	RE-ISSUED FOR USE	AS	MG	AW	FM	CM
C1	15/01/13	ISSUED FOR USE	AS	MG	AW	FM	CM
A1	07/12/12	ISSUED FOR COMPANY REVIEW	AS	MG	AW	FM	

COMMENTS SHEET

REVISION	DATE	COMMENTS
A1	07/12/12	ISSUED FOR COMPANY REVIEW
C1	15/01/13	ISSUED FOR USE
C2	17/01/13	RE-ISSUED FOR USE



Table of Contents

1.0	INTRODUCTION	3
1.1	Quad 204 Project Description.....	3
1.2	Document Scope	4
1.3	Terms and Definitions.....	4
1.4	Abbreviations	4
2.0	PIPELINE INVENTORY	5

Appendix I Schiehallion Pipelines

Appendix II Loyal Pipelines

Appendix III WOSPS Pipelines



Index of Tables

Figure 1.1 Field Layout Schematic	3
Table 2.1 Pipeline Inventories.....	5

1.0 INTRODUCTION

1.1 Quad 204 Project Description

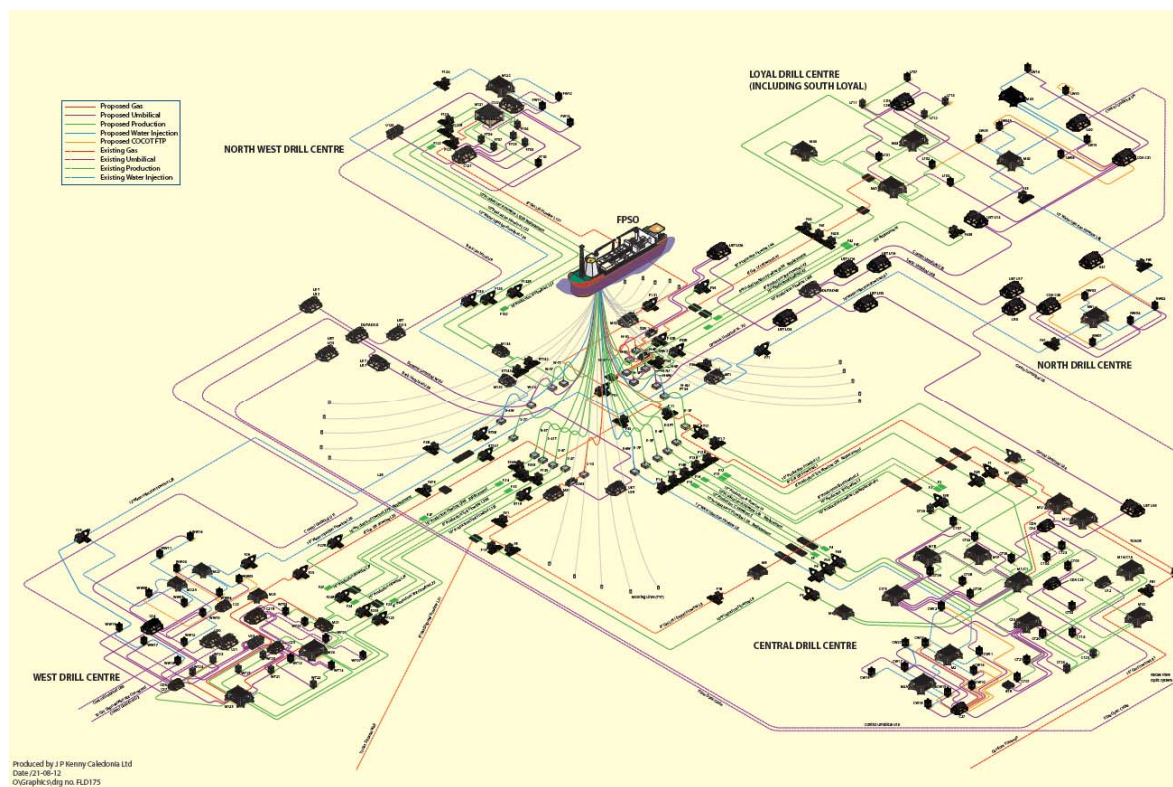
The Quad 204 project addresses the Schiehallion Area development, encompassing the Schiehallion and Loyal fields, which are located approximately 150 km West of the Shetland Islands in Quadrant 204 of the UKCS. The water depth is 350 m – 500 m. Schiehallion and Loyal together with the Clair and the adjacent Foinaven fields are situated in the area generally termed the West of Shetland (WoS).

The Schiehallion FPSO exploits the Schiehallion and Loyal fields via a multi-centre subsea infrastructure. The FPSO exports oil by means of a shuttle tanker system. The production fluid contains significant amounts of gas in solution, and this is either utilised for power generation, or as a lifting medium. Any excess gas remaining in the production system after these processes is exported to Magnus on the East of Shetlands via Sullom Voe using the gas export pipeline system.

The objective of the Quad 204 project is to ensure that the subsea systems currently in place in the Schiehallion area are suitable to continue production through to 2035.

The Quad 204 project has evaluated a wide range of concept options. The base case design taken forward from previous design stages is to replace the existing FPSO with a new-built FPSO on the same location and to re-use the existing subsea infrastructure where practicable, replacing only where required and extending it as required to support additional wells. The proposed field layout is shown in schematic form in Figure 1.1.

Figure 1.1 Field Layout Schematic



1.2 Document Scope

The Quad 204 project comprises the removal, reconfiguration and installation of subsea production equipment for process transportation of production, water, gas, hydraulic controls and injection chemical systems. These activities are licensed by the regulatory body, the Department of Energy and Climate Change under the Petroleum Act 1998 through PWA variations requested by the COMPANY

This document lists the active pipeline numbers that have been issued by DECC as a reference to aid communications relating to future variation requests for the forthcoming field suspension and installation programs.

This document, once approved, shall be revised in conjunction with approved PWA variations in order to reflect the status of DECC's pipeline database.

1.3 Terms and Definitions

Within this Specification, the following terms shall be applicable:

COMPANY	BP Exploration Operating Company Ltd. or any of its subsidiaries or representative agents.
Shall	Indicates a mandatory requirement.
Should	Indicates a preferred requirement or course of action.
May	Indicates an optional course of action.

1.4 Abbreviations

DECC	Department of Energy and Climate Change
PWA	Pipeline Works Authorisation
WOSPS	West of Shetland Pipeline System

2.0 PIPELINE INVENTORY

Table 2.1 Pipeline Inventories

Description	PWA	
Schiehallion Pipeline Inventory	13/W/97	Appendix I
Loyal Pipeline Inventory	14/W/97	Appendix II
WOSPS Pipeline Inventory	5/W/01	Appendix III

Appendix I
Schiehallion Pipelines

PWA 13/W/97 PIPELINE NUMBER	STATUS AS CURRENTLY KNOWN	STATUS AFTER FIELD SHUT IN	STATUS DURING FIELD SUSPENSION	STATUS WHEN FIELD FULLY RESTARTED	Comments	Type	From Location	To Location	Fill Medium	Trenched
PL1375/1	Out of use	Suspended	Recover 2013	1 – Recovered		Dynamic umbilical	Schiehallion FPSO	Schiehallion FPSO DUTA D1	Depressurised HW540	No
PL1375/2	Out of use	Suspended	Recover 2013	1 – Recovered		Dynamic umbilical	Schiehallion FPSO	Schiehallion FPSO DUTA D1	Depressurised HW540	No
PL1375/3	Out of use	Suspended	Recover 2013	1 – Recovered		Dynamic umbilical	Schiehallion FPSO	Schiehallion FPSO DUTA D1	Depressurised HW540	No
PL1375/4	Out of use	Suspended	Recover 2013	1 – Recovered		Dynamic umbilical	Schiehallion FPSO	Schiehallion FPSO DUTA D1	Depressurised HW540	No
PL1375/5	Out of use	Suspended	Recover 2013	1 – Recovered		Dynamic umbilical	Schiehallion FPSO	Schiehallion FPSO DUTA D1	Depressurised HW540	No
PL1375/6	Out of use	Suspended	Recover 2013	1 – Recovered		Dynamic umbilical	Schiehallion FPSO	Schiehallion FPSO DUTA D1	Depressurised HW540	No
PL1375/7	Out of use	Suspended	Recover 2013	1 – Recovered		Dynamic umbilical	Schiehallion FPSO	Schiehallion FPSO DUTA D1	Depressurised HW540	No
PL1376/1	Out of use	Suspended	Recover 2013	1 – Recovered		FTP	Schiehallion FPSO DUTA D1	Schiehallion FPSO UET U11	Hydraulic cores filled with HW540, Chemical cores filled with CI/ SI, methanol line filled with methanol, Spare lines filled with Aqua Glycol. All lines depressurised.	No
PL1376/2	Out of use	Suspended	Recover 2013	1 – Recovered		FTP	Schiehallion FPSO DUTA D1	Schiehallion FPSO UET U11	Hydraulic cores filled with HW540, Chemical cores filled with CI/ SI, methanol line filled with methanol, Spare lines filled with Aqua Glycol. All lines depressurised.	No
PL1376/3	Out of use	Suspended	Recover 2013	1 – Recovered		FTP	Schiehallion FPSO DUTA D1	Schiehallion FPSO UET U11	Hydraulic cores filled with HW540, Chemical cores filled with CI/ SI, methanol line filled with methanol, Spare lines filled with Aqua Glycol. All lines depressurised.	No
PL1376/4	Out of use	Suspended	Recover 2013	1 – Recovered		FTP	Schiehallion FPSO DUTA D1	Schiehallion FPSO UET U11	Hydraulic cores filled with HW540, Chemical cores filled with CI/ SI, methanol line filled with methanol, Spare lines filled with Aqua Glycol. All lines depressurised.	No
PL1376/5	Out of use	Suspended	Recover 2013	1 – Recovered		FTP	Schiehallion FPSO DUTA D1	Schiehallion FPSO UET U11	Hydraulic cores filled with HW540, Chemical cores filled with CI/ SI, methanol line filled with methanol, Spare lines filled with Aqua Glycol. All lines depressurised.	No
PL1376/6	Out of use	Suspended	Recover 2013	1 – Recovered		FTP	Schiehallion FPSO DUTA D1	Schiehallion FPSO UET U11	Hydraulic cores filled with HW540, Chemical cores filled with CI/ SI, methanol line filled with methanol, Spare lines filled with Aqua Glycol. All lines depressurised.	No
PL1377	See comment	Suspended	Recover 2015		Carrier line. Removal of number from PWA has been requested via PWA variation application issued to DECC January 2013.				N/A	No
PL1377/1	Out of use	Suspended	Recover 2015	1 – Recovered		FTP	Schiehallion FPSO DUTA D1	Schiehallion FPSO CDA U61R	Hydraulic cores filled with HW540, Chemical cores filled with CI/ SI, methanol line filled with methanol, Spare lines filled with Aqua Glycol. All lines depressurised.	No
PL1377/2	Out of use	Suspended	Recover 2015	1 – Recovered		FTP	Schiehallion FPSO DUTA D1	Schiehallion FPSO CDA U61R	Hydraulic cores filled with HW540, Chemical cores filled with CI/ SI, methanol line filled with methanol, Spare lines filled with Aqua Glycol. All lines depressurised.	No
PL1377/3	Out of use	Suspended	Recover 2015	1 – Recovered		FTP	Schiehallion FPSO DUTA D1	Schiehallion FPSO CDA U61R	Hydraulic cores filled with HW540, Chemical cores filled with CI/ SI, methanol line filled with methanol, Spare lines filled with Aqua Glycol. All lines depressurised.	No
PL1377/4	Out of use	Suspended	Recover 2015	1 – Recovered		FTP	Schiehallion FPSO DUTA D1	Schiehallion FPSO CDA U61R	Hydraulic cores filled with HW540, Chemical cores filled with CI/ SI, methanol line filled with methanol, Spare lines filled with Aqua Glycol. All lines depressurised.	No
PL1377/5	Out of use	Suspended	Recover 2015	1 – Recovered		FTP	Schiehallion FPSO DUTA D1	Schiehallion FPSO CDA U61R	Hydraulic cores filled with HW540, Chemical cores filled with CI/ SI, methanol line filled with methanol, Spare lines filled with Aqua Glycol. All lines depressurised.	No

PWA 13/W/97 PIPELINE NUMBER	STATUS AS CURRENTLY KNOWN	STATUS AFTER FIELD SHUT IN	STATUS DURING FIELD SUSPENSION	STATUS WHEN FIELD FULLY RESTARTED	Comments	Type	From Location	To Location	Fill Medium	Trenched
PL1377/6	Out of use	Suspended	Recover 2015	1 – Recovered		FTP	Schiehallion FPSO DUTA D1	Schiehallion FPSO CDA U61R	Hydraulic cores filled with HW540, Chemical cores filled with CI/ SI, methanol line filled with methanol, Spare lines filled with Aqua Glycol. All lines depressurised.	No
PL1378	See comment	Suspended	Recover 2013		Carrier line. Removal of number from PWA has been requested via PWA variation application issued to DECC January 2013.				N/A	No
PL1378/1	Out of use	Suspended	Recover 2013	1 – Recovered	Requires application for entry into IPR	FTP	Schiehallion FPSO UTA U70	Schiehallion FPSO CDA U61R	Hydraulic cores filled with HW540, Chemical cores filled with CI/ SI, methanol line filled with methanol, Spare lines filled with Aqua Glycol. All lines depressurised.	No
PL1378/2	Out of use	Suspended	Recover 2013	1 – Recovered	Requires application for entry into IPR	FTP	Schiehallion FPSO UTA U70	Schiehallion FPSO CDA U61R	Hydraulic cores filled with HW540, Chemical cores filled with CI/ SI, methanol line filled with methanol, Spare lines filled with Aqua Glycol. All lines depressurised.	No
PL1378/3	Out of use	Suspended	Recover 2013	1 – Recovered	Requires application for entry into IPR	FTP	Schiehallion FPSO UTA U70	Schiehallion FPSO CDA U61R	Hydraulic cores filled with HW540, Chemical cores filled with CI/ SI, methanol line filled with methanol, Spare lines filled with Aqua Glycol. All lines depressurised.	No
PL1378/4	Out of use	Suspended	Recover 2013	1 – Recovered	Requires application for entry into IPR	FTP	Schiehallion FPSO UTA U70	Schiehallion FPSO CDA U61R	Hydraulic cores filled with HW540, Chemical cores filled with CI/ SI, methanol line filled with methanol, Spare lines filled with Aqua Glycol. All lines depressurised.	No
PL1378/5	Out of use	Suspended	Recover 2013	1 – Recovered	Requires application for entry into IPR	FTP	Schiehallion FPSO UTA U70	Schiehallion FPSO CDA U61R	Hydraulic cores filled with HW540, Chemical cores filled with CI/ SI, methanol line filled with methanol, Spare lines filled with Aqua Glycol. All lines depressurised.	No
PL1378/6	Out of use	Suspended	Recover 2013	1 – Recovered	Requires application for entry into IPR	FTP	Schiehallion FPSO UTA U70	Schiehallion FPSO CDA U61R	Hydraulic cores filled with HW540, Chemical cores filled with CI/ SI, methanol line filled with methanol, Spare lines filled with Aqua Glycol. All lines depressurised.	No
PL1379/1	Out of use	Suspended	Suspended	2 – Disconnected and left in situ	Requires application for entry into IPR	Static umbilical	Schiehallion FPSO UTA U70	Schiehallion FPSO UET U71	Hydraulic cores filled with HW540, Chemical cores filled with CI/ SI, methanol line filled with methanol, Spare lines filled with Aqua Glycol. All lines depressurised.	No
PL1379/2	Out of use	Suspended	Suspended	2 – Disconnected and left in situ	Requires application for entry into IPR	Static umbilical	Schiehallion FPSO UTA U70	Schiehallion FPSO UET U71	Hydraulic cores filled with HW540, Chemical cores filled with CI/ SI, methanol line filled with methanol, Spare lines filled with Aqua Glycol. All lines depressurised.	No
PL1379/3	Out of use	Suspended	Suspended	2 – Disconnected and left in situ	Requires application for entry into IPR	Static umbilical	Schiehallion FPSO UTA U70	Schiehallion FPSO UET U71	Hydraulic cores filled with HW540, Chemical cores filled with CI/ SI, methanol line filled with methanol, Spare lines filled with Aqua Glycol. All lines depressurised.	No
PL1379/4	Out of use	Suspended	Suspended	2 – Disconnected and left in situ	Requires application for entry into IPR	Static umbilical	Schiehallion FPSO UTA U70	Schiehallion FPSO UET U71	Hydraulic cores filled with HW540, Chemical cores filled with CI/ SI, methanol line filled with methanol, Spare lines filled with Aqua Glycol. All lines depressurised.	No
PL1379/5	Out of use	Suspended	Suspended	2 – Disconnected and left in situ	Requires application for entry into IPR	Static umbilical	Schiehallion FPSO UTA U70	Schiehallion FPSO UET U71	Hydraulic cores filled with HW540, Chemical cores filled with CI/ SI, methanol line filled with methanol, Spare lines filled with Aqua Glycol. All lines depressurised.	No

PWA 13/W/97 PIPELINE NUMBER	STATUS AS CURRENTLY KNOWN	STATUS AFTER FIELD SHUT IN	STATUS DURING FIELD SUSPENSION	STATUS WHEN FIELD FULLY RESTARTED	Comments	Type	From Location	To Location	Fill Medium	Trenched
PL1379/6	Out of use	Suspended	Suspended	2 – Disconnected and left in situ	Requires application for entry into IPR	Static umbilical	Schiehallion FPSO UTA U70	Schiehallion FPSO UET U71	Hydraulic cores filled with HW540, Chemical cores filled with CI/ SI, methanol line filled with methanol, Spare lines filled with Aqua Glycol. All lines depressurised.	No
PL1379/7	Out of use	Suspended	Suspended	2 – Disconnected and left in situ	Requires application for entry into IPR	Static umbilical	Schiehallion FPSO UTA U70	Schiehallion FPSO UET U71	Hydraulic cores filled with HW540, Chemical cores filled with CI/ SI, methanol line filled with methanol, Spare lines filled with Aqua Glycol. All lines depressurised.	No
PL1380/1	In Service	Suspended	Recover 2013	1 – Recovered		Dynamic umbilical	Schiehallion FPSO	Schiehallion FPSO DUTA D2	Depressurised HW540	No
PL1380/2	In Service	Suspended	Recover 2013	1 – Recovered		Dynamic umbilical	Schiehallion FPSO	Schiehallion FPSO DUTA D2	Depressurised HW540	No
PL1380/3	In Service	Suspended	Recover 2013	1 – Recovered		Dynamic umbilical	Schiehallion FPSO	Schiehallion FPSO DUTA D2	Depressurised HW540	No
PL1380/4	In Service	Suspended	Recover 2013	1 – Recovered		Dynamic umbilical	Schiehallion FPSO	Schiehallion FPSO DUTA D2	Depressurised HW540	No
PL1380/5	In Service	Suspended	Recover 2013	1 – Recovered		Dynamic umbilical	Schiehallion FPSO	Schiehallion FPSO DUTA D2	Depressurised HW540	No
PL1380/6	In Service	Suspended	Recover 2013	1 – Recovered		Dynamic umbilical	Schiehallion FPSO	Schiehallion FPSO DUTA D2	Depressurised HW540	No
PL1380/7	In Service	Suspended	Recover 2013	1 – Recovered		Dynamic umbilical	Schiehallion FPSO	Schiehallion FPSO DUTA D2	Depressurised HW540	No
PL1381/1	Out of use	Suspended	Recover 2013	1 – Recovered		FTP	Schiehallion FPSO DUTA DTA D2	Schiehallion FPSO UET U71	Hydraulic cores filled with HW540, Chemical cores filled with CI/ SI, methanol line filled with methanol, Spare lines filled with Aqua Glycol. All lines depressurised.	No
PL1381/2	Out of use	Suspended	Recover 2013	1 – Recovered		FTP	Schiehallion FPSO DUTA DTA D2	Schiehallion FPSO UET U71	Hydraulic cores filled with HW540, Chemical cores filled with CI/ SI, methanol line filled with methanol, Spare lines filled with Aqua Glycol. All lines depressurised.	No
PL1381/3	Out of use	Suspended	Recover 2013	1 – Recovered		FTP	Schiehallion FPSO DUTA DTA D2	Schiehallion FPSO UET U71	Hydraulic cores filled with HW540, Chemical cores filled with CI/ SI, methanol line filled with methanol, Spare lines filled with Aqua Glycol. All lines depressurised.	No
PL1381/4	Out of use	Suspended	Recover 2013	1 – Recovered		FTP	Schiehallion FPSO DUTA DTA D2	Schiehallion FPSO UET U71	Hydraulic cores filled with HW540, Chemical cores filled with CI/ SI, methanol line filled with methanol, Spare lines filled with Aqua Glycol. All lines depressurised.	No
PL1381/5	Out of use	Suspended	Recover 2013	1 – Recovered		FTP	Schiehallion FPSO DUTA DTA D2	Schiehallion FPSO UET U71	Hydraulic cores filled with HW540, Chemical cores filled with CI/ SI, methanol line filled with methanol, Spare lines filled with Aqua Glycol. All lines depressurised.	No
PL1381/6	Out of use	Suspended	Recover 2013	1 – Recovered		FTP	Schiehallion FPSO DUTA DTA D2	Schiehallion FPSO UET U71	Hydraulic cores filled with HW540, Chemical cores filled with CI/ SI, methanol line filled with methanol, Spare lines filled with Aqua Glycol. All lines depressurised.	No
PL1382/1	In Service	Suspended	Recover 2013	1 – Recovered		FTP	Schiehallion FPSO DUTA DTA D2	Schiehallion FPSO UET U51	Hydraulic and Chemical cores filled with depressurised HW540, methanol line filled with depressurised methanol	No
PL1382/2	In Service	Suspended	Recover 2013	1 – Recovered		FTP	Schiehallion FPSO DUTA DTA D2	Schiehallion FPSO UET U51	Hydraulic and Chemical cores filled with depressurised HW540, methanol line filled with depressurised methanol	No
PL1382/3	In Service	Suspended	Recover 2013	1 – Recovered		FTP	Schiehallion FPSO DUTA DTA D2	Schiehallion FPSO UET U51	Hydraulic and Chemical cores filled with depressurised HW540, methanol line filled with depressurised methanol	No
PL1382/4	In Service	Suspended	Recover 2013	1 – Recovered		FTP	Schiehallion FPSO DUTA DTA D2	Schiehallion FPSO UET U51	Hydraulic and Chemical cores filled with depressurised HW540, methanol line filled with depressurised methanol	No
PL1382/5	In Service	Suspended	Recover 2013	1 – Recovered		FTP	Schiehallion FPSO DUTA DTA D2	Schiehallion FPSO UET U51	Hydraulic and Chemical cores filled with depressurised HW540, methanol line filled with depressurised methanol	No
PL1383/1	In Service	Suspended	Suspended	2 – Disconnected and left in situ		Static umbilical	Schiehallion FPSO UET U51	Schiehallion FPSO UTA U50	Hydraulic and Chemical cores filled with depressurised HW540, methanol line filled with depressurised methanol	No

PWA 13/W/97 PIPELINE NUMBER	STATUS AS CURRENTLY KNOWN	STATUS AFTER FIELD SHUT IN	STATUS DURING FIELD SUSPENSION	STATUS WHEN FIELD FULLY RESTARTED	Comments	Type	From Location	To Location	Fill Medium	Trenched
PL1383/2	In Service	Suspended	Suspended	2 – Disconnected and left in situ		Static umbilical	Schiehallion FPSO UET U51	Schiehallion FPSO UTA U50	Hydraulic and Chemical cores filled with depressurised HW540, methanol line filled with depressurised methanol	No
PL1383/3	In Service	Suspended	Suspended	2 – Disconnected and left in situ		Static umbilical	Schiehallion FPSO UET U51	Schiehallion FPSO UTA U50	Hydraulic and Chemical cores filled with depressurised HW540, methanol line filled with depressurised methanol	No
PL1383/4	In Service	Suspended	Suspended	2 – Disconnected and left in situ		Static umbilical	Schiehallion FPSO UET U51	Schiehallion FPSO UTA U50	Hydraulic and Chemical cores filled with depressurised HW540, methanol line filled with depressurised methanol	No
PL1383/5	In Service	Suspended	Suspended	2 – Disconnected and left in situ		Static umbilical	Schiehallion FPSO UET U51	Schiehallion FPSO UTA U50	Hydraulic and Chemical cores filled with depressurised HW540, methanol line filled with depressurised methanol	No
PL1384	In Service	Suspended	Suspended	2 – Disconnected and left in situ	Riser recovered 2013. Prod. jumper will be recovered and returned to shore; new prod. jumpers required.	Prod Flowline	Central Manifold M1	Schiehallion FPSO Riser (Hang Off)	Inhibited Injection quality Dyed Seawater	No
PL1385	In Service	Suspended	Suspended	2 – Disconnected and left in situ	Riser recovered 2013. Prod. jumper will be recovered and returned to shore; new prod. jumpers required.	Prod Flowline	Central Manifold M1	Schiehallion FPSO Riser (Hang Off)	Inhibited Injection quality Dyed Seawater	No
PL1386	In Service	Suspended	Suspended	2 – Disconnected and left in situ	Riser recovered 2013. Prod. jumper will be recovered and returned to shore; new prod. jumpers required.	Prod Flowline	Central Manifold M1	Schiehallion FPSO Riser (Hang Off)	Inhibited Injection quality Dyed Seawater	No
PL1387	In Service	Suspended	Suspended	2 – Disconnected and left in situ	Riser recovered 2013. Prod. jumper will be recovered and returned to shore; new prod. jumpers required.	Prod Flowline	Central Manifold M1	Schiehallion FPSO Riser (Hang Off)	Inhibited Injection quality Dyed Seawater	No
PL1388/1	In Service	Suspended	Recover 2014	1 – Recovered	Onshore disposal. New prod. jumpers required	Production jumper	Schiehallion Prod Tree CP21	Central Manifold M1 (Production)	Inhibited injection quality water (50% Methanol)	No
PL1388/2	In Service	Suspended	Recover 2014	1 – Recovered	Onshore disposal. New prod. jumpers required	Production jumper	Schiehallion Prod Tree CP21	Central Manifold M1 (Production/Test)	Inhibited injection quality water (50% Methanol)	No
PL1388/3	In Service	Suspended	Recover 2014	1 – Recovered	Onshore disposal. New prod. jumpers required	Production jumper	Central Manifold M1 (Gas Lift)	Schiehallion Prod Tree CP21	Inhibited injection quality water (50% Methanol)	No
PL1388JCP01	See comment	Suspended	Recover 2014		Carrier line. Removal of number from PWA has been requested via PWA variation application issued to DECC January 2013.				N/A	
PL1388JCP01/1	In Service	Suspended	Recover 2014	1 – Recovered	Onshore disposal. New prod. jumpers required	Production jumper	Prod Tree CP01	Prod Tree CP21 (Production)	Inhibited injection quality water (50% Methanol)	No
PL1388JCP01/2	In Service	Suspended	Recover 2014	1 – Recovered	Onshore disposal. New prod. jumpers required	Production jumper	Prod Tree CP01	Prod Tree CP21 (Production/Test)	Inhibited injection quality water (50% Methanol)	No
PL1388JCP01/3	In Service	Suspended	Recover 2014	1 – Recovered	Onshore disposal. New prod. jumpers required	Production jumper	Prod Tree CP21 (Gas Lift)	Prod Tree CP01	Inhibited injection quality water (50% Methanol)	No
PL1389/1	In Service	Suspended	Suspended	4 – Returned to service		Production jumper	Central Manifold M1A (Production)	Central Manifold M1	Inhibited injection quality water (50% Methanol)	No
PL1389/2	In Service	Suspended	Suspended	4 – Returned to service		Production jumper	Central Manifold M1A (Production/Test)	Central Manifold M1	Inhibited injection quality water (50% Methanol)	No
PL1389/3	In Service	Suspended	Suspended	4 – Returned to service		Production jumper	Central Manifold M1	Central Manifold M1A (Gas Lift)	Depressurised residual gas	No
PL1390/1	In Service	Suspended	Suspended	4 – Returned to service		Production jumper	Central Manifold M1D (Production)	Central Manifold M1	Inhibited injection quality water (50% Methanol)	No
PL1390/2	In Service	Suspended	Suspended	4 – Returned to service		Production jumper	Central Manifold M1D (Production/Test)	Central Manifold M1	Inhibited injection quality water (50% Methanol)	No
PL1390/3	In Service	Suspended	Suspended	4 – Returned to service		Production jumper	Central Manifold M1	Central Manifold M1D (Gas Lift)	Depressurised residual gas	No
PL1390JCP03	See comment	Suspended	Recover 2014		Carrier line. Removal of number from PWA has been requested via PWA variation application issued to DECC January 2013.				N/A	No
PL1390JCP03/1	In Service	Suspended	Recover 2014	1 – Recovered	Replaced by new jumper	Production jumper	Central Manifold M1D (Production)	Production Tree CP03	Inhibited injection quality water (50% Methanol)	No
PL1390JCP03/2	In Service	Suspended	Recover 2014	1 – Recovered	Replaced by new jumper	Production jumper	Central Manifold M1D (Production/Test)	Production Tree CP03	Inhibited injection quality water (50% Methanol)	No
PL1390JCP03/3	In Service	Suspended	Recover 2014	1 – Recovered	Replaced by new jumper	Production jumper	Production Tree CP03	Central Manifold M1D (Gas Lift)	Depressurised residual gas	No
PL1390JCP20	See comment	Suspended	Recover 2014		Carrier line. Removal of number from PWA has been requested via PWA variation application issued to DECC January 2013.				N/A	No
PL1390JCP20/1	In Service	Suspended	Recover 2014	1 – Recovered	Replaced by new jumper	Production jumper	Central Manifold M1D (Production)	Production Tree CP20	Inhibited injection quality water (50% Methanol)	No
PL1390JCP20/2	In Service	Suspended	Recover 2014	1 – Recovered	Replaced by new jumper	Production jumper	Central Manifold M1D (Production/Test)	Production Tree CP20	Inhibited injection quality water (50% Methanol)	No
PL1390JCP20/3	In Service	Suspended	Recover 2014	1 – Recovered	Replaced by new jumper	Production jumper	Production Tree CP20	Central Manifold M1D (Gas Lift)	Depressurised residual gas	No
PL1391/1	Recovered	Not present					N/A	N/A	N/A	
PL1391/2	Recovered	Not present					N/A	N/A	N/A	
PL1391/3	Recovered	Not present					N/A	N/A	N/A	
PL1392/1	In Service	Suspended	Suspended	4 – Returned to service		Production jumper	Prod Tree CP05 (Production)	Central Manifold M1	Inhibited injection quality water (50% Methanol)	No
PL1392/2	In Service	Suspended	Suspended	4 – Returned to service		Production jumper	Prod Tree CP05 (Production/Test)	Central Manifold M1	Inhibited injection quality water (50% Methanol)	No
PL1392/3	In Service	Suspended	Suspended	4 – Returned to service		Production jumper	Central Manifold M1	Prod Tree CP05 (Gas Lift)	Depressurised residual gas	No
PL1393/1	In Service	Suspended	Suspended	4 – Returned to service		Production jumper	Central Manifold M1B (Production)	Central Manifold M1	Inhibited injection quality water (50% Methanol)	No

PWA 13/W/97 PIPELINE NUMBER	STATUS AS CURRENTLY KNOWN	STATUS AFTER FIELD SHUT IN	STATUS DURING FIELD SUSPENSION	STATUS WHEN FIELD FULLY RESTARTED	Comments	Type	From Location	To Location	Fill Medium	Trenched
PL1393/2	In Service	Suspended	Suspended	4 – Returned to service		Production jumper	Central Manifold M1B (Production/Test)	Central Manifold M1	Inhibited injection quality water (50% Methanol)	No
PL1393/3 PL1394	In Service See comment	Suspended Suspended	Suspended Suspended	4 – Returned to service	Carrier line. Removal of number from PWA has been requested via PWA variation application issued to DECC January 2013.	Production jumper	Central Manifold M1	Central Manifold M1B (Gas Lift)	Depressurised residual gas N/A	No No
PL1394/1	In Service	Suspended	Suspended	4 – Returned to service		Production jumper	Central Manifold M1F (Production)	Central Manifold M1	Inhibited injection quality water (50% Methanol)	No
PL1394/2	In Service	Suspended	Suspended	4 – Returned to service		Production jumper	Central Manifold M1F (Production/Test)	Central Manifold M1	Inhibited injection quality water (50% Methanol)	No
PL1394/3 PL1394JCP22	In Service See comment	Suspended Suspended	Suspended Suspended	4 – Returned to service	Carrier line. Removal of number from PWA has been requested via PWA variation application issued to DECC January 2013.	Production jumper	Central Manifold M1	Central Manifold M1F (Gas Lift)	Depressurised residual gas N/A	No No
PL1394JCP08	See comment	Suspended	Suspended		Carrier line. Removal of number from PWA has been requested via PWA variation application issued to DECC January 2013.				N/A	No
PL1394JCP08/1	In Service	Suspended	Suspended	4 – Returned to service		Production jumper	Production Tree CP08	Central Manifold M1F (Production)	Inhibited injection quality water (50% Methanol)	No
PL1394JCP08/2	In Service	Suspended	Suspended	4 – Returned to service		Production jumper	Production Tree CP08	Central Manifold M1F (Production/Test)	Inhibited injection quality water (50% Methanol)	No
PL1394JCP08/3 PL1394JCP22/1	In Service In Service	Suspended Suspended	Suspended Suspended	4 – Returned to service 4 – Returned to service		Production jumper Production jumper	Central Manifold M1F (Gas Lift) Production Tree CP22	Production Tree CP08 Central Manifold M1F (Production)	Depressurised residual gas Inhibited injection quality water (50% Methanol)	No No
PL1394JCP22/2	In Service	Suspended	Suspended	4 – Returned to service		Production jumper	Production Tree CP22	Central Manifold M1F (Production/Test)	Inhibited injection quality water (50% Methanol)	No
PL1394JCP22/3 PL1395/1	In Service In Service	Suspended Suspended	Suspended Suspended	4 – Returned to service 4 – Returned to service		Production jumper Production jumper	Central Manifold M1F (Gas Lift) Production Tree CP09	Production Tree CP22 Central Manifold M1 (Production)	Depressurised residual gas Inhibited injection quality water (50% Methanol)	No No
PL1395/2	In Service	Suspended	Suspended	4 – Returned to service		Production jumper	Production Tree CP09	Central Manifold M1 (Production/Test)	Inhibited injection quality water (50% Methanol)	No
PL1395/3 PL1396 PL1397	In Service In Service In Service	Suspended Suspended Suspended	Suspended Suspended Suspended	4 – Returned to service 4 – Returned to service 4 – Returned to service	Riser recovered 2013 Riser recovered 2013	Production jumper Gas Lift Flowline WI Flowline	Central Manifold M1 (Gas Lift) Schiehallion FPSO Riser (Hang Off) Schiehallion FPSO Riser (Hang Off)	Production Tree CP09 Central Manifold M1J Central Water Inj Manifold M2A	Depressurised residual gas Depressurised residual gas Inhibited Injection Quality Water	No No No
PL1397JCW15	In Service	Suspended	Suspended	4 – Returned to service		WI jumper	Central Water Inj Manifold M2A	Water Inj tree CW15	Inhibited Injection Quality Water	No
PL1397JCW17	In Service	Suspended	Suspended	4 – Returned to service		WI jumper	Central Water Inj Manifold M2A	Water Inj tree CW17	Inhibited Injection Quality Water	No
PL1397JCW18	In Service	Suspended	Suspended	4 – Returned to service		WI jumper	Central Water Inj Manifold M2A	Water Inj tree CW18	Inhibited Injection Quality Water	No
PL1397JCW19	In Service	Suspended	Suspended	4 – Returned to service		WI jumper	Central Water Inj Manifold M2A	Water Inj tree CW19	Inhibited Injection Quality Water	No
PL1398	In Service	Suspended	Suspended	4 – Returned to service		WI jumper	Central Water Inj Manifold M2	Water Inj tree CW11	Inhibited Injection Quality Water	No
PL1399	In Service	Suspended	Suspended	4 – Returned to service		WI jumper	Central Water Inj Manifold M2	Water Inj tree CW12	Inhibited Injection Quality Water	No
PL1400	In Service	Suspended	Suspended	4 – Returned to service		WI jumper	Central Water Inj Manifold M2	Water Inj tree CW16	Inhibited Injection Quality Water	No
PL1401	In Service	Suspended	Suspended	4 – Returned to service		WI jumper	Central Water Inj Manifold M2	Water Inj tree CW13	Inhibited Injection Quality Water	No
PL1402/1	Out of use	Suspended	Suspended	2 – Disconnected and left in situ	Requires application for entry into IPR	Static umbilical	Schiehallion FPSO UET U11	Schiehallion Central UET U10	Hydraulic cores filled with HW540, Chemical cores filled with CI/ SI, methanol line filled with methanol, Spare lines filled with Aqua Glycol. All lines depressurised.	No
PL1402/2	Out of use	Suspended	Suspended	2 – Disconnected and left in situ	Requires application for entry into IPR	Static umbilical	Schiehallion FPSO UET U11	Schiehallion Central UET U10	Hydraulic cores filled with HW540, Chemical cores filled with CI/ SI, methanol line filled with methanol, Spare lines filled with Aqua Glycol. All lines depressurised.	No
PL1402/3	Out of use	Suspended	Suspended	2 – Disconnected and left in situ	Requires application for entry into IPR	Static umbilical	Schiehallion FPSO UET U11	Schiehallion Central UET U10	Hydraulic cores filled with HW540, Chemical cores filled with CI/ SI, methanol line filled with methanol, Spare lines filled with Aqua Glycol. All lines depressurised.	No
PL1402/4	Out of use	Suspended	Suspended	2 – Disconnected and left in situ	Requires application for entry into IPR	Static umbilical	Schiehallion FPSO UET U11	Schiehallion Central UET U10	Hydraulic cores filled with HW540, Chemical cores filled with CI/ SI, methanol line filled with methanol, Spare lines filled with Aqua Glycol. All lines depressurised.	No

PWA 13/W/97 PIPELINE NUMBER	STATUS AS CURRENTLY KNOWN	STATUS AFTER FIELD SHUT IN	STATUS DURING FIELD SUSPENSION	STATUS WHEN FIELD FULLY RESTARTED	Comments	Type	From Location	To Location	Fill Medium	Trenched
PL1402/5	Out of use	Suspended	Suspended	2 – Disconnected and left in situ	Requires application for entry into IPR	Static umbilical	Schiehallion FPSO UET U11	Schiehallion Central UET U10	Hydraulic cores filled with HW540, Chemical cores filled with CI/ SI, methanol line filled with methanol, Spare lines filled with Aqua Glycol. All lines depressurised.	No
PL1403	Out of use - within IPR (see comment)	Suspended	Recover 2013		Already in IPR. Numbering was updated to simply PL1403 as a result of PWA variation 79/V/10. Request that these defunct numbers are removed from the PWA has been made via PWA variation applicated issued to DECC January 2013				N/A	No
PL1403/1	Out of use - within IPR	Suspended	Recover 2013	1 – Recovered		FTP	Schiehallion Central UET U12	Schiehallion Central CDT C1P	Hydraulic and Chemical cores filled with depressurised HW540, methanol line filled with depressurised methanol	No
PL1403/2	Out of use - within IPR	Suspended	Recover 2013	1 – Recovered		FTP	Schiehallion Central UET U12	Schiehallion Central CDT C1P	Hydraulic and Chemical cores filled with depressurised HW540, methanol line filled with depressurised methanol	No
PL1403/3	Out of use - within IPR	Suspended	Recover 2013	1 – Recovered		FTP	Schiehallion Central UET U12	Schiehallion Central CDT C1P	Hydraulic and Chemical cores filled with depressurised HW540, methanol line filled with depressurised methanol	No
PL1403/4	Out of use - within IPR	Suspended	Recover 2013	1 – Recovered		FTP	Schiehallion Central UET U12	Schiehallion Central CDT C1P	Hydraulic and Chemical cores filled with depressurised HW540, methanol line filled with depressurised methanol	No
PL1403/5	Out of use - within IPR	Suspended	Recover 2013	1 – Recovered		FTP	Schiehallion Central UET U12	Schiehallion Central CDT C1P	Hydraulic and Chemical cores filled with depressurised HW540, methanol line filled with depressurised methanol	No
PL1404	See comment	Suspended			To be re-instated in line with PWAV Jan 2013 and as per 24/V/03.				N/A	No
PL1404/1	In Service	Suspended	Recover 2013	1 – Recovered		FTP	Central CDT C1P (Via Basket)	Prod Tree CP01	Hydraulic and Chemical cores filled with depressurised HW540, methanol line filled with depressurised methanol	No
PL1404/2	In Service	Suspended	Recover 2013	1 – Recovered		FTP	Central CDT C1P (Via Basket)	Prod Tree CP01	Hydraulic and Chemical cores filled with depressurised HW540, methanol line filled with depressurised methanol	No
PL1404/3	In Service	Suspended	Recover 2013	1 – Recovered		FTP	Central CDT C1P (Via Basket)	Prod Tree CP01	Hydraulic and Chemical cores filled with depressurised HW540, methanol line filled with depressurised methanol	No
PL1404A	Not installed (see comment)	Not present			Not installed. Removal from PWA requested via PWA variation issued to DECC January 2013.		N/A	N/A	N/A	
PL1405/1	In Service	Suspended	Recover 2013	1 – Recovered		FTP	Central CDT C1P	Central CSA C1A	Hydraulic and Chemical cores filled with depressurised HW540, methanol line filled with depressurised methanol	No
PL1405/2	In Service	Suspended	Recover 2013	1 – Recovered		FTP	Central CDT C1P	Central CSA C1A	Hydraulic and Chemical cores filled with depressurised HW540, methanol line filled with depressurised methanol	No
PL1405/3	In Service	Suspended	Recover 2013	1 – Recovered		FTP	Central CDT C1P	Central CSA C1A	Hydraulic and Chemical cores filled with depressurised HW540, methanol line filled with depressurised methanol	No
PL1406/1	In Service	Suspended	Recover 2013	1 – Recovered		FTP	Central CDT C1P	Central CSA C1D	Hydraulic and Chemical cores filled with depressurised HW540, methanol line filled with depressurised methanol	No
PL1406/2	In Service	Suspended	Recover 2013	1 – Recovered		FTP	Central CDT C1P	Central CSA C1D	Hydraulic and Chemical cores filled with depressurised HW540, methanol line filled with depressurised methanol	No
PL1406/3	In Service	Suspended	Recover 2013	1 – Recovered		FTP	Central CDT C1P	Central CSA C1D	Hydraulic and Chemical cores filled with depressurised HW540, methanol line filled with depressurised methanol	No
PL1406JCP03	See comment	Suspended			Carrier line. Removal of number from PWA has been requested via PWA variation application issued to DECC January 2013.				N/A	No
PL1406JCP20	See comment	Suspended			Carrier line. Removal of number from PWA has been requested via PWA variation application issued to DECC January 2013.	FTP			Hydraulic and Chemical cores filled with depressurised HW540, methanol line filled with depressurised methanol	No

PWA 13/W/97 PIPELINE NUMBER	STATUS AS CURRENTLY KNOWN	STATUS AFTER FIELD SHUT IN	STATUS DURING FIELD SUSPENSION	STATUS WHEN FIELD FULLY RESTARTED	Comments	Type	From Location	To Location	Fill Medium	Trenched
PL1406JCP21	See comment	Suspended			Carrier line. Removal of number from PWA has been requested via PWA variation application issued to DECC January 2013.	FTP			Hydraulic and Chemical cores filled with depressurised HW540, methanol line filled with depressurised methanol	No
PL1407/1	In Service	Suspended	Suspended	4 – Returned to service		FTP	Central CDT C1P	Prod Tree CP04	Hydraulic and Chemical cores filled with depressurised HW540, methanol line filled with depressurised methanol	No
PL1407/2	In Service	Suspended	Suspended	4 – Returned to service		FTP	Central CDT C1P	Prod Tree CP04	Hydraulic and Chemical cores filled with depressurised HW540, methanol line filled with depressurised methanol	No
PL1407/3	In Service	Suspended	Suspended	4 – Returned to service		FTP	Central CDT C1P	Prod Tree CP04	Hydraulic and Chemical cores filled with depressurised HW540, methanol line filled with depressurised methanol	No
PL1408/1	In Service	Suspended	Recover 2012	1 – Recovered	Recovered prior to Field Suspension	FTP	Central CDT C1P	Prod Tree CP05	Hydraulic and Chemical cores filled with depressurised HW540, methanol line filled with depressurised methanol	No
PL1408/2	In Service	Suspended	Recover 2012	1 – Recovered	Recovered prior to Field Suspension	FTP	Central CDT C1P	Prod Tree CP05	Hydraulic and Chemical cores filled with depressurised HW540, methanol line filled with depressurised methanol	No
PL1408/3	In Service	Suspended	Recover 2012	1 – Recovered	Recovered prior to Field Suspension	FTP	Central CDT C1P	Prod Tree CP05	Hydraulic and Chemical cores filled with depressurised HW540, methanol line filled with depressurised methanol	No
PL1409/1	In Service	Suspended	Recover 2013	1 – Recovered		FTP	Central CDT C1P	Central CSA C1B	Hydraulic and Chemical cores filled with depressurised HW540, methanol line filled with depressurised methanol	No
PL1409/2	In Service	Suspended	Recover 2013	1 – Recovered		FTP	Central CDT C1P	Central CSA C1B	Hydraulic and Chemical cores filled with depressurised HW540, methanol line filled with depressurised methanol	No
PL1409/3	In Service	Suspended	Recover 2013	1 – Recovered		FTP	Central CDT C1P	Central CSA C1B	Hydraulic and Chemical cores filled with depressurised HW540, methanol line filled with depressurised methanol	No
PL1410/1	In Service	Suspended	Recover 2013	1 – Recovered		FTP	Production Tree CP08	Prod Tree CP22	Hydraulic and Chemical cores filled with depressurised HW540, methanol line filled with depressurised methanol	No
PL1410/2	In Service	Suspended	Recover 2013	1 – Recovered		FTP	Production Tree CP08	Prod Tree CP22	Hydraulic and Chemical cores filled with depressurised HW540, methanol line filled with depressurised methanol	No
PL1410/3	In Service	Suspended	Recover 2013	1 – Recovered		FTP	Production Tree CP08	Prod Tree CP22	Hydraulic and Chemical cores filled with depressurised HW540, methanol line filled with depressurised methanol	No
PL1410JCP08	See comment	Suspended			Carrier line. Removal of number from PWA has been requested via PWA variation application issued to DECC January 2013.	FTP			N/A	No
PL1411/1	In Service	Suspended	Suspended	3 – Repositioned	Relocate 2014 onto new CDA C1PR	FTP	Central CDT C1P	Production Tree CP09	Hydraulic and Chemical cores filled with depressurised HW540, methanol line filled with depressurised methanol	No
PL1411/2	In Service	Suspended	Suspended	3 – Repositioned	Relocate 2014 onto new CDA C1PR	FTP	Central CDT C1P	Production Tree CP09	Hydraulic and Chemical cores filled with depressurised HW540, methanol line filled with depressurised methanol	No
PL1411/3	In Service	Suspended	Suspended	3 – Repositioned	Relocate 2014 onto new CDA C1PR	FTP	Central CDT C1P	Production Tree CP09	Hydraulic and Chemical cores filled with depressurised HW540, methanol line filled with depressurised methanol	No
PL1412	In Service	Suspended	Suspended	4 – Returned to service	Riser recovered 2013	WI Flowline	Schiehallion FPSO Riser (Hang Off)	North Water Inj Manifold M61	Inhibited Injection Quality Water	No
PL1413	In Service	Suspended	Suspended	4 – Returned to service		WI jumper	North Water Inj Manifold M61	North Water Inj Tree NW01	Inhibited Injection Quality Water	No
PL1414	In Service	Suspended	Suspended	1 – Recovered		WI jumper	North Water Inj Manifold M61	North Water Inj Tree NW02	Inhibited Injection Quality Water	No
PL1415	In Service	Suspended	Suspended	2 – Disconnected and left in situ	Riser recovered 2013. Prod. jumper will be recovered and returned to shore; new prod. jumpers required.	Prod Flowline	West Prod Manifold M21	Schiehallion FPSO Riser (Hang Off)	Inhibited Injection quality Dyed Seawater	No
PL1416	In Service	Suspended	Suspended	2 – Disconnected and left in situ	Riser recovered 2013. Prod. jumper will be recovered and returned to shore; new prod. jumpers required.	Prod Flowline	West Prod Manifold M21	Schiehallion FPSO Riser (Hang Off)	Inhibited Injection quality Dyed Seawater	No

PWA 13/W/97 PIPELINE NUMBER	STATUS AS CURRENTLY KNOWN	STATUS AFTER FIELD SHUT IN	STATUS DURING FIELD SUSPENSION	STATUS WHEN FIELD FULLY RESTARTED	Comments	Type	From Location	To Location	Fill Medium	Trenched
PL1417/1	In Service	Suspended	Suspended	4 – Returned to service		Production jumper	Production Tree WP01	West Prod Manifold M21 (Production)	Inhibited injection quality water (50% Methanol)	No
PL1417/2	In Service	Suspended	Suspended	4 – Returned to service		Production jumper	Production Tree WP01	West Prod Manifold M21 (Production/Test)	Inhibited injection quality water (50% Methanol)	No
PL1417/3	In Service	Suspended	Suspended	4 – Returned to service		Production jumper	West Prod Manifold M21 (Gas Lift)	Production Tree WP01	Depressurised residual gas	No
PL1418/1	In Service	Suspended	Suspended	4 – Returned to service		Production jumper	Production Tree WP03	West Prod Manifold M21 (Production)	Inhibited injection quality water (50% Methanol)	No
PL1418/2	In Service	Suspended	Suspended	4 – Returned to service		Production jumper	Production Tree WP03	West Prod Manifold M21 (Production/Test)	Inhibited injection quality water (50% Methanol)	No
PL1418/3	In Service	Suspended	Suspended	4 – Returned to service		Production jumper	West Prod Manifold M21 (Gas Lift)	Production Tree WP03	Depressurised residual gas	No
PL1419	See comment	Suspended	Suspended	4 – Returned to service	Carrier line. Removal of number from PWA has been requested via PWA variation application issued to DECC January 2013.				N/A	No
PL1419/1	In Service	Suspended	Suspended	4 – Returned to service		Production jumper	Production Tree WP02	West Prod Manifold M21 (Production)	Inhibited injection quality water (50% Methanol)	No
PL1419/2	In Service	Suspended	Suspended	4 – Returned to service		Production jumper	Production Tree WP02	West Prod Manifold M21 (Production/Test)	Inhibited injection quality water (50% Methanol)	No
PL1419/3	In Service	Suspended	Suspended	4 – Returned to service		Production jumper	West Prod Manifold M21 (Gas Lift)	Production Tree WP02	Depressurised residual gas	No
PL1420	In Service	Suspended	Suspended	4 – Returned to service		Gas lift flowline	Schiehallion FPSO FTA F11	West Prod Manifold M21	Depressurised residual gas	No
PL1421	In Service	Suspended	Suspended	4 – Returned to service	Gas jumper relocated from F25 to M25 WI jumper recovered 2013	WI flowline	Schiehallion FPSO FTA F71	West Water Inj Manifold M22A	Inhibited Injection Quality Water	No
PL1421A	Not installed (see comment)	Not present			Not installed. Removal from PWA requested via PWA variation issued to DECC January 2013.		N/A	N/A	N/A	
PL1421JWW08	In Service	Suspended	Suspended	4 – Returned to service		WI jumper	West Water Inj Manifold M22A	West Water Inj Tree WW08	Inhibited Injection Quality Water	No
PL1421JWW09	In Service	Suspended	Suspended	4 – Returned to service		WI jumper	West Water Inj Manifold M22A	West Water Inj tree WW09	Inhibited Injection Quality Water	No
PL1421JWW10	In Service	Suspended	Suspended	4 – Returned to service		WI jumper	West Water Inj Manifold M22A	West Water Inj Tree WW10	Inhibited Injection Quality Water	No
PL1422	In Service	Suspended	Suspended	4 – Returned to service		WI jumper	West Water Inj Manifold M22	West Water Inj Tree WW04	Inhibited Injection Quality Water	No
PL1423	In Service	Suspended	Suspended	4 – Returned to service		WI jumper	West Water Inj Manifold M22	West Water Inj Tree WW05	Inhibited Injection Quality Water	No
PL1424	In Service	Suspended	Suspended	4 – Returned to service		WI jumper	West Water Inj Manifold M22	West Water Inj Tree WW06	Inhibited Injection Quality Water	No
PL1425/1	Out of use	Suspended	Suspended	2 – Disconnected and left in situ	Already in IPR	Static umbilical	Schiehallion FPSO UET U61	Schiehallion FPSO UET U60	Hydraulic cores filled with HW540, Chemical cores filled with CI/ SI, methanol line filled with methanol, Spare lines filled with Aqua Glycol. All lines depressurised.	No
PL1425/2	Out of use	Suspended	Suspended	2 – Disconnected and left in situ	Already in IPR	Static umbilical	Schiehallion FPSO UET U61	Schiehallion FPSO UET U60	Hydraulic cores filled with HW540, Chemical cores filled with CI/ SI, methanol line filled with methanol, Spare lines filled with Aqua Glycol. All lines depressurised.	No
PL1425/3	Out of use	Suspended	Suspended	2 – Disconnected and left in situ	Already in IPR	Static umbilical	Schiehallion FPSO UET U61	Schiehallion FPSO UET U60	Hydraulic cores filled with HW540, Chemical cores filled with CI/ SI, methanol line filled with methanol, Spare lines filled with Aqua Glycol. All lines depressurised.	No
PL1425/4	Out of use	Suspended	Suspended	2 – Disconnected and left in situ	Already in IPR	Static umbilical	Schiehallion FPSO UET U61	Schiehallion FPSO UET U60	Hydraulic cores filled with HW540, Chemical cores filled with CI/ SI, methanol line filled with methanol, Spare lines filled with Aqua Glycol. All lines depressurised.	No
PL1425/5	Out of use	Suspended	Suspended	2 – Disconnected and left in situ	Already in IPR	Static umbilical	Schiehallion FPSO UET U61	Schiehallion FPSO UET U60	Hydraulic cores filled with HW540, Chemical cores filled with CI/ SI, methanol line filled with methanol, Spare lines filled with Aqua Glycol. All lines depressurised.	No
PL1425/6	Out of use	Suspended	Suspended	2 – Disconnected and left in situ	Already in IPR	Static umbilical	Schiehallion FPSO UET U61	Schiehallion FPSO UET U60	Hydraulic cores filled with HW540, Chemical cores filled with CI/ SI, methanol line filled with methanol, Spare lines filled with Aqua Glycol. All lines depressurised.	No
PL1425/7	Out of use	Suspended	Suspended	2 – Disconnected and left in situ	Already in IPR	Static umbilical	Schiehallion FPSO UET U61	Schiehallion FPSO UET U60	Hydraulic cores filled with HW540, Chemical cores filled with CI/ SI, methanol line filled with methanol, Spare lines filled with Aqua Glycol. All lines depressurised.	No
PL1426	See comment	Suspended			Carrier line. Removal of number from PWA has been requested via PWA variation application issued to DECC January 2013.				N/A	No

PWA 13/W/97 PIPELINE NUMBER	STATUS AS CURRENTLY KNOWN	STATUS AFTER FIELD SHUT IN	STATUS DURING FIELD SUSPENSION	STATUS WHEN FIELD FULLY RESTARTED	Comments	Type	From Location	To Location	Fill Medium	Trenched
PL1426/1	Out of use	Suspended	Suspended	2 – Disconnected and left in situ	Requires application for entry into IPR	Static umbilical	Schiehallion FPSO UET U60R	Schiehallion FPSO UET U31	Hydraulic cores filled with HW540, Chemical cores filled with CI/ SI, methanol line filled with methanol, Spare lines filled with Aqua Glycol. All lines depressurised.	No
PL1426/2	Out of use	Suspended	Suspended	2 – Disconnected and left in situ	Requires application for entry into IPR	Static umbilical	Schiehallion FPSO UET U60R	Schiehallion FPSO UET U31	Hydraulic cores filled with HW540, Chemical cores filled with CI/ SI, methanol line filled with methanol, Spare lines filled with Aqua Glycol. All lines depressurised.	No
PL1426/3	Out of use	Suspended	Suspended	2 – Disconnected and left in situ	Requires application for entry into IPR	Static umbilical	Schiehallion FPSO UET U60R	Schiehallion FPSO UET U31	Hydraulic cores filled with HW540, Chemical cores filled with CI/ SI, methanol line filled with methanol, Spare lines filled with Aqua Glycol. All lines depressurised.	No
PL1426/4	Out of use	Suspended	Suspended	2 – Disconnected and left in situ	Requires application for entry into IPR	Static umbilical	Schiehallion FPSO UET U60R	Schiehallion FPSO UET U31	Hydraulic cores filled with HW540, Chemical cores filled with CI/ SI, methanol line filled with methanol, Spare lines filled with Aqua Glycol. All lines depressurised.	No
PL1426/5	Out of use	Suspended	Suspended	2 – Disconnected and left in situ	Requires application for entry into IPR	Static umbilical	Schiehallion FPSO UET U60R	Schiehallion FPSO UET U31	Hydraulic cores filled with HW540, Chemical cores filled with CI/ SI, methanol line filled with methanol, Spare lines filled with Aqua Glycol. All lines depressurised.	No
PL1426/6	Out of use	Suspended	Suspended	2 – Disconnected and left in situ	Requires application for entry into IPR	Static umbilical	Schiehallion FPSO UET U60R	Schiehallion FPSO UET U31	Hydraulic cores filled with HW540, Chemical cores filled with CI/ SI, methanol line filled with methanol, Spare lines filled with Aqua Glycol. All lines depressurised.	No
PL1427/1	Out of use	Suspended	Suspended	2 – Disconnected and left in situ	Requires application for entry into IPR	Static umbilical	Schiehallion FPSO UET U31	Schiehallion West UTA U30	Hydraulic cores filled with HW540, Chemical cores filled with CI/ SI, methanol line filled with methanol, Spare lines filled with Aqua Glycol. All lines depressurised.	No
PL1427/2	Out of use	Suspended	Suspended	2 – Disconnected and left in situ	Requires application for entry into IPR	Static umbilical	Schiehallion FPSO UET U31	Schiehallion West UTA U30	Hydraulic cores filled with HW540, Chemical cores filled with CI/ SI, methanol line filled with methanol, Spare lines filled with Aqua Glycol. All lines depressurised.	No
PL1427/3	Out of use	Suspended	Suspended	2 – Disconnected and left in situ	Requires application for entry into IPR	Static umbilical	Schiehallion FPSO UET U31	Schiehallion West UTA U30	Hydraulic cores filled with HW540, Chemical cores filled with CI/ SI, methanol line filled with methanol, Spare lines filled with Aqua Glycol. All lines depressurised.	No
PL1427/4	Out of use	Suspended	Suspended	2 – Disconnected and left in situ	Requires application for entry into IPR	Static umbilical	Schiehallion FPSO UET U31	Schiehallion West UTA U30	Hydraulic cores filled with HW540, Chemical cores filled with CI/ SI, methanol line filled with methanol, Spare lines filled with Aqua Glycol. All lines depressurised.	No
PL1427/5	Out of use	Suspended	Suspended	2 – Disconnected and left in situ	Requires application for entry into IPR	Static umbilical	Schiehallion FPSO UET U31	Schiehallion West UTA U30	Hydraulic cores filled with HW540, Chemical cores filled with CI/ SI, methanol line filled with methanol, Spare lines filled with Aqua Glycol. All lines depressurised.	No
PL1427/6	Out of use	Suspended	Suspended	2 – Disconnected and left in situ	Requires application for entry into IPR	Static umbilical	Schiehallion FPSO UET U31	Schiehallion West UTA U30	Hydraulic cores filled with HW540, Chemical cores filled with CI/ SI, methanol line filled with methanol, Spare lines filled with Aqua Glycol. All lines depressurised.	No
PL1428	In Service (see comment)	Suspended		3 – Repositioned	See note for PL1428/1 - /3	FTP	Schiehallion CDA C21	Schiehallion prod Well WP03	Hydraulic and Chemical cores filled with depressurised HW540, methanol line filled with depressurised methanol	No

PWA 13/W/97 PIPELINE NUMBER	STATUS AS CURRENTLY KNOWN	STATUS AFTER FIELD SHUT IN	STATUS DURING FIELD SUSPENSION	STATUS WHEN FIELD FULLY RESTARTED	Comments	Type	From Location	To Location	Fill Medium	Trenched
PL1428/1	See comment	Suspended	Relocated	3 – Repositioned	Numbering was updated to simply PL1428 as a result of PWA variation 48/V/06. Request that these defunct numbers are removed from the PWA has been made via PWA variation applicated issued to DECC January 2013	FTP	Schiehallion CDA C21	Schiehallion prod Well WP03	Hydraulic and Chemical cores filled with depressurised HW540, methanol line filled with depressurised methanol	No
PL1428/2		Suspended	Relocated	3 – Repositioned	As above	FTP	Schiehallion CDA C21	Schiehallion prod Well WP03	Hydraulic and Chemical cores filled with depressurised HW540, methanol line filled with depressurised methanol	No
PL1428/3		Suspended	Relocated	3 – Repositioned	As above	FTP	Schiehallion CDA C21	Schiehallion prod Well WP03	Hydraulic and Chemical cores filled with depressurised HW540, methanol line filled with depressurised methanol	No
PL1429	In Service (see comment)	Suspended		3 – Repositioned	See note for PL1429/1 - /3	FTP	Schiehallion CDA C21	Schiehallion Prod Well WP01	Hydraulic and Chemical cores filled with depressurised HW540, methanol line filled with depressurised methanol	No
PL1429/1	See comment	Suspended	Relocated	3 – Repositioned	Numbering was updated to simply PL1429 as a result of PWA variation 48/V/06. Request that these defunct numbers are removed from the PWA has been made via PWA variation applicated issued to DECC January 2013	FTP	Schiehallion CDA C21	Schiehallion Prod Well WP01	Hydraulic and Chemical cores filled with depressurised HW540, methanol line filled with depressurised methanol	No
PL1429/2		Suspended	Relocated	3 – Repositioned	As above	FTP	Schiehallion CDA C21	Schiehallion Prod Well WP01	Hydraulic and Chemical cores filled with depressurised HW540, methanol line filled with depressurised methanol	No
PL1429/3		Suspended	Relocated	3 – Repositioned	As above	FTP	Schiehallion CDA C21	Schiehallion Prod Well WP01	Hydraulic and Chemical cores filled with depressurised HW540, methanol line filled with depressurised methanol	No
PL1430	In Service (see comment)	Suspended		3 – Repositioned	See note for PL1430/1 - /3	FTP	Schiehallion CDA C21	Schiehallion Prod Well WP02	Hydraulic and Chemical cores filled with depressurised HW540, methanol line filled with depressurised methanol	No
PL1430/1	See comment	Suspended	Relocated	3 – Repositioned	Numbering was updated to simply PL1430 as a result of PWA variation 48/V/06. Request that these defunct numbers are removed from the PWA has been made via PWA variation applicated issued to DECC January 2013	FTP	Schiehallion CDA C21	Schiehallion Prod Well WP02	Hydraulic and Chemical cores filled with depressurised HW540, methanol line filled with depressurised methanol	No
PL1430/2		Suspended	Relocated	3 – Repositioned	As above	FTP	Schiehallion CDA C21	Schiehallion Prod Well WP02	Hydraulic and Chemical cores filled with depressurised HW540, methanol line filled with depressurised methanol	No
PL1430/3		Suspended	Relocated	3 – Repositioned	As above	FTP	Schiehallion CDA C21	Schiehallion Prod Well WP02	Hydraulic and Chemical cores filled with depressurised HW540, methanol line filled with depressurised methanol	No
PL1431 PL1432 PL1433	In Service In Service Recovered (see comment)	Suspended Suspended Not present	Suspended Suspended Recovered 2012	4 – Returned to service 4 – Returned to service 1 – Recovered	Riser recovered 2013 Removed from the seabed. Removal of these PL numbers requested in PWA variation application issued to DECC in January 2013	Gas disposal flowline Gas jumper N/A	Schiehallion FPSO Riser (Hang Off) Schiehallion Gas Disposal FTA F21 N/A	Schiehallion Gas Disposal FTA F21 Schiehallion Gas Disposal Well AG01 N/A	Depressurised residual gas Depressurised residual gas N/A	No No No
PL1433/1 PL1433/2 PL1434/1		Not present Not present Suspended	Recovered 2012 Recovered 2012 Suspended	1 – Recovered 1 – Recovered 2 – Disconnected and left in situ	As above As above	N/A N/A Static umbilical	N/A N/A Schiehallion West UTA U21	N/A N/A Schiehallion Gas Disposal UET U20	N/A N/A Hydraulic and Chemical cores filled with depressurised HW540, methanol line filled with depressurised methanol	No No No
PL1434/2	In Service	Suspended	Suspended	2 – Disconnected and left in situ		Static umbilical	Schiehallion West UTA U21	Schiehallion Gas Disposal UET U20	Hydraulic and Chemical cores filled with depressurised HW540, methanol line filled with depressurised methanol	No
PL1435/1	In Service	Suspended	Suspended	2 – Disconnected and left in situ		FTP	Schiehallion Gas Disposal UET U20	Schiehallion Gas Disposal Well AG01	Hydraulic and Chemical cores filled with depressurised HW540, methanol line filled with depressurised methanol	No
PL1435/2	In Service	Suspended	Suspended	2 – Disconnected and left in situ		FTP	Schiehallion Gas Disposal UET U20	Schiehallion Gas Disposal Well AG01	Hydraulic and Chemical cores filled with depressurised HW540, methanol line filled with depressurised methanol	No
PL1439	Not installed (see comment)	Not present			Not installed. Removal from PWA requested via PWA variation issued to DECC January 2013.		N/A	N/A	N/A	
PL1439/1	Not installed (see comment)	Not present			Not installed. Removal from PWA requested via PWA variation issued to DECC January 2013.		N/A	N/A	N/A	
PL1439/2	Not installed (see comment)	Not present			Not installed. Removal from PWA requested via PWA variation issued to DECC January 2013.		N/A	N/A	N/A	
PL1439/3	Not installed (see comment)	Not present			Not installed. Removal from PWA requested via PWA variation issued to DECC January 2013.		N/A	N/A	N/A	
PL1439/4	Not installed (see comment)	Not present			Not installed. Removal from PWA requested via PWA variation issued to DECC January 2013.		N/A	N/A	N/A	

PWA 13/W/97 PIPELINE NUMBER	STATUS AS CURRENTLY KNOWN	STATUS AFTER FIELD SHUT IN	STATUS DURING FIELD SUSPENSION	STATUS WHEN FIELD FULLY RESTARTED	Comments	Type	From Location	To Location	Fill Medium	Trenched
PL1439/5	Not installed (see comment)	Not present			Not installed. Removal from PWA requested via PWA variation issued to DECC January 2013.		N/A	N/A	N/A	
PL1439/6	Not installed (see comment)	Not present			Not installed. Removal from PWA requested via PWA variation issued to DECC January 2013.		N/A	N/A	N/A	
PL1440/1	Not installed (see comment)	Not present			Not installed. Removal from PWA requested via PWA variation issued to DECC January 2013.		N/A	N/A	N/A	
PL1440/2	Not installed (see comment)	Not present			Not installed. Removal from PWA requested via PWA variation issued to DECC January 2013.		N/A	N/A	N/A	
PL1440/3	Not installed (see comment)	Not present			Not installed. Removal from PWA requested via PWA variation issued to DECC January 2013.		N/A	N/A	N/A	
PL1440/4	Not installed (see comment)	Not present			Not installed. Removal from PWA requested via PWA variation issued to DECC January 2013.		N/A	N/A	N/A	
PL1440/5	Not installed (see comment)	Not present			Not installed. Removal from PWA requested via PWA variation issued to DECC January 2013.		N/A	N/A	N/A	
PL1440/6	Not installed (see comment)	Not present			Not installed. Removal from PWA requested via PWA variation issued to DECC January 2013.		N/A	N/A	N/A	
PL1713	In Service	Suspended	Suspended	4 – Returned to service		WI jumper	North WI Manifold M61	North WI Tree NW03	Inhibited Injection Quality Water	No
PL1714/1	In Service	Suspended	Suspended	4 – Returned to service		Production jumper	West Prod Manifold M24	West Prod Man M21 (Production)	Inhibited injection quality water (50% Methanol)	No
PL1714/2	In Service	Suspended	Suspended	4 – Returned to service		Production jumper	West Prod Manifold M24	West Prod Man M21 (Production/Test)	Inhibited injection quality water (50% Methanol)	No
PL1714/3	In Service	Suspended	Suspended	4 – Returned to service		Production jumper	West Prod Man M21 (Gas Lift)	West Prod Manifold M24	Depressurised residual gas	No
PL1715.10JWP13	In Service	Suspended	Suspended	3 – Repositioned	Relocate one end from CDA C21 to C21R	FTP	West Prod Tree WP13	West Prod Tree WP07	Hydraulic and Chemical cores filled with depressurised HW540, methanol line filled with depressurised methanol	No
PL1715.11JWP13	In Service	Suspended	Suspended	3 – Repositioned	Relocate one end from CDA C21 to C21R	FTP	West Prod Tree WP13	West Prod Tree WP07	Hydraulic and Chemical cores filled with depressurised HW540, methanol line filled with depressurised methanol	No
PL1715.12JWP13	In Service	Suspended	Suspended	3 – Repositioned	Relocate one end from CDA C21 to C21R	FTP	West Prod Tree WP13	West Prod Tree WP07	Hydraulic and Chemical cores filled with depressurised HW540, methanol line filled with depressurised methanol	No
PL1715.13JWP13	In Service	Suspended	Suspended	3 – Repositioned	Relocate one end from CDA C21 to C21R	FTP	West Prod Tree WP13	West Prod Tree WP07	Hydraulic and Chemical cores filled with depressurised HW540, methanol line filled with depressurised methanol	No
PL1715.1JWP13	In Service	Suspended	Suspended	3 – Repositioned	Relocate one end from CDA C21 to C21R	FTP	West Prod Tree WP13	West Prod Tree WP07	Hydraulic and Chemical cores filled with depressurised HW540, methanol line filled with depressurised methanol	No
PL1715.2JWP13	In Service	Suspended	Suspended	3 – Repositioned	Relocate one end from CDA C21 to C21R	FTP	West Prod Tree WP13	West Prod Tree WP07	Hydraulic and Chemical cores filled with depressurised HW540, methanol line filled with depressurised methanol	No
PL1715.3JWP13	In Service	Suspended	Suspended	3 – Repositioned	Relocate one end from CDA C21 to C21R	FTP	West Prod Tree WP13	West Prod Tree WP07	Hydraulic and Chemical cores filled with depressurised HW540, methanol line filled with depressurised methanol	No
PL1715.4JWP13	In Service	Suspended	Suspended	3 – Repositioned	Relocate one end from CDA C21 to C21R	FTP	West Prod Tree WP13	West Prod Tree WP07	Hydraulic and Chemical cores filled with depressurised HW540, methanol line filled with depressurised methanol	No
PL1715.5JWP13	In Service	Suspended	Suspended	3 – Repositioned	Relocate one end from CDA C21 to C21R	FTP	West Prod Tree WP13	West Prod Tree WP07	Hydraulic and Chemical cores filled with depressurised HW540, methanol line filled with depressurised methanol	No
PL1715.6JWP13	In Service	Suspended	Suspended	3 – Repositioned	Relocate one end from CDA C21 to C21R	FTP	West Prod Tree WP13	West Prod Tree WP07	Hydraulic and Chemical cores filled with depressurised HW540, methanol line filled with depressurised methanol	No
PL1715.7JWP13	In Service	Suspended	Suspended	3 – Repositioned	Relocate one end from CDA C21 to C21R	FTP	West Prod Tree WP13	West Prod Tree WP07	Hydraulic and Chemical cores filled with depressurised HW540, methanol line filled with depressurised methanol	No
PL1715.8JWP13	In Service	Suspended	Suspended	3 – Repositioned	Relocate one end from CDA C21 to C21R	FTP	West Prod Tree WP13	West Prod Tree WP07	Hydraulic and Chemical cores filled with depressurised HW540, methanol line filled with depressurised methanol	No
PL1715.9JWP13	In Service	Suspended	Suspended	3 – Repositioned	Relocate one end from CDA C21 to C21R	FTP	West Prod Tree WP13	West Prod Tree WP07	Hydraulic and Chemical cores filled with depressurised HW540, methanol line filled with depressurised methanol	No
PL1715/1	See comment				These numbers should be replaced with PL1715.10 - .13JWP13 - ref PWA variation 8/V/04 and 56/V/05. Request that DECC update records was made via PWA variation application made January 2013		N/A	N/A	N/A	

PWA 13/W/97 PIPELINE NUMBER	STATUS AS CURRENTLY KNOWN	STATUS AFTER FIELD SHUT IN	STATUS DURING FIELD SUSPENSION	STATUS WHEN FIELD FULLY RESTARTED	Comments	Type	From Location	To Location	Fill Medium	Trenched
PL1715/2 PL1715/3 PL1774/1	In Service	Suspended	Suspended	1 – Recovered	As above As above Recovered 2021	Production jumper	N/A N/A Central Prod Tree CP07	N/A N/A Central Manifold M1B (Production)	N/A N/A Inhibited injection quality water (50% Methanol)	No
PL1774/2	In Service	Suspended	Suspended	1 – Recovered	Recovered 2021	Production jumper	Central Prod Tree CP07	Central Manifold M1B (Production/Test)	Inhibited injection quality water (50% Methanol)	No
PL1774/3 PL1775/1	In Service In Service	Suspended Suspended	Suspended Suspended	1 – Recovered 4 – Returned to service	Recovered 2021	Production jumper Production jumper	Central Manifold M1B (Gas Lift) Central Prod Tree CP06	Central Prod Tree CP07 Central Manifold M1B (Production)	Depressurised residual gas Inhibited injection quality water (50% Methanol)	No No
PL1775/2	In Service	Suspended	Suspended	4 – Returned to service		Production jumper	Central Prod Tree CP06	Central Manifold M1B (Production/Test)	Inhibited injection quality water (50% Methanol)	No
PL1775/3 PL1776/1	In Service In Service	Suspended Suspended	Suspended Suspended	4 – Returned to service 1 – Recovered	Recovered 2013	Production jumper FTP	Central Manifold M1B (Gas Lift) Central CSA C1B	Central Prod Tree CP06 Central Prod Tree CP06	Depressurised residual gas Hydraulic and Chemical cores filled with depressurised HW540, methanol line filled with depressurised methanol	No No
PL1776/2	In Service	Suspended	Suspended	1 – Recovered		FTP	Central CSA C1B	Central Prod Tree CP06	Hydraulic and Chemical cores filled with depressurised HW540, methanol line filled with depressurised methanol	No
PL1776/3	In Service	Suspended	Suspended	1 – Recovered		FTP	Central CSA C1B	Central Prod Tree CP06	Hydraulic and Chemical cores filled with depressurised HW540, methanol line filled with depressurised methanol	No
PL1777/1	In Service	Suspended	Suspended	1 – Recovered		FTP	Central CSA C1B	Central Prod Tree CP07	Hydraulic and Chemical cores filled with depressurised HW540, methanol line filled with depressurised methanol	No
PL1777/2	In Service	Suspended	Suspended	1 – Recovered		FTP	Central CSA C1B	Central Prod Tree CP07	Hydraulic and Chemical cores filled with depressurised HW540, methanol line filled with depressurised methanol	No
PL1777/3	In Service	Suspended	Suspended	1 – Recovered		FTP	Central CSA C1B	Central Prod Tree CP07	Hydraulic and Chemical cores filled with depressurised HW540, methanol line filled with depressurised methanol	No
PL1778/1	In Service	Suspended	Suspended	4 – Returned to service		Production jumper	Central Prod Tree CP02	Central Prod Man M1A (Production)	Inhibited injection quality water (50% Methanol)	No
PL1778/2	In Service	Suspended	Suspended	4 – Returned to service		Production jumper	Central Prod Tree CP02	Central Prod Man M1A (Production/Test)	Inhibited injection quality water (50% Methanol)	No
PL1778/3 PL1779	In Service See comment	Suspended Suspended	Suspended	4 – Returned to service	Carrier line. Removal of number from PWA has been requested via PWA variation application issued to DECC January 2013.	Production jumper	Central Prod Man M1A (Gas Lift)	Central Prod Tree CP02	Depressurised residual gas N/A	No No
PL1779/1	In Service	Suspended	Suspended	4 – Returned to service		Production jumper	Central Prod Tree CP14	Central Prod Man M1A (Production)	Inhibited injection quality water (50% Methanol)	No
PL1779/2	In Service	Suspended	Suspended	4 – Returned to service		Production jumper	Central Prod Tree CP14	Central Prod Man M1A (Production/Test)	Inhibited injection quality water (50% Methanol)	No
PL1779/3 PL1780/1	In Service In Service	Suspended Not present	Suspended Removed 2012	4 – Returned to service 1 – Recovered	Removed prior to field suspension	Production jumper FTP	Central Prod Man M1A (Gas Lift) Central CSA C1A	Central Prod Tree CP14 Central Prod Tree CP02	Depressurised residual gas Hydraulic and Chemical cores filled with depressurised HW540, methanol line filled with depressurised methanol	No No
PL1780/2	In Service	Not present	Removed 2012	1 – Recovered	Removed prior to field suspension	FTP	Central CSA C1A	Central Prod Tree CP02	Hydraulic and Chemical cores filled with depressurised HW540, methanol line filled with depressurised methanol	No
PL1780/3	In Service	Not present	Removed 2012	1 – Recovered	Removed prior to field suspension	FTP	Central CSA C1A	Central Prod Tree CP02	Hydraulic and Chemical cores filled with depressurised HW540, methanol line filled with depressurised methanol	No
PL1781/1	In Service	Suspended	Recover 2014	1 – Recovered		FTP	Central CSA C1A	Central Prod Tree CP14	Hydraulic and Chemical cores filled with depressurised HW540, methanol line filled with depressurised methanol	No
PL1781/2	In Service	Suspended	Recover 2014	1 – Recovered		FTP	Central CSA C1A	Central Prod Tree CP14	Hydraulic and Chemical cores filled with depressurised HW540, methanol line filled with depressurised methanol	No
PL1781/3	In Service	Suspended	Recover 2014	1 – Recovered		FTP	Central CSA C1A	Central Prod Tree CP14	Hydraulic and Chemical cores filled with depressurised HW540, methanol line filled with depressurised methanol	No
PL1849 PL1850.1	In Service In Service	Suspended Suspended	Suspended Recover 2013	4 – Returned to service 1 – Recovered		Gas jumper FTP	Central Manifold M1J Central CSA C1A	Central Manifold M1C Central Manifold M1C (Gas)	Depressurised residual gas Hydraulic and Chemical cores filled with depressurised HW540, methanol line filled with depressurised methanol	No No

PWA 13/W/97 PIPELINE NUMBER	STATUS AS CURRENTLY KNOWN	STATUS AFTER FIELD SHUT IN	STATUS DURING FIELD SUSPENSION	STATUS WHEN FIELD FULLY RESTARTED	Comments	Type	From Location	To Location	Fill Medium	Trenched
PL1850.10	In Service	Suspended	Recover 2013	1 – Recovered		FTP	Central CSA C1A	Central Manifold M1C (Gas)	Hydraulic and Chemical cores filled with depressurised HW540, methanol line filled with depressurised methanol	No
PL1850.2	In Service	Suspended	Recover 2013	1 – Recovered		FTP	Central CSA C1A	Central Manifold M1C (Gas)	Hydraulic and Chemical cores filled with depressurised HW540, methanol line filled with depressurised methanol	No
PL1850.3	In Service	Suspended	Recover 2013	1 – Recovered		FTP	Central CSA C1A	Central Manifold M1C (Gas)	Hydraulic and Chemical cores filled with depressurised HW540, methanol line filled with depressurised methanol	No
PL1850.4	In Service	Suspended	Recover 2013	1 – Recovered		FTP	Central CSA C1A	Central Manifold M1C (Gas)	Hydraulic and Chemical cores filled with depressurised HW540, methanol line filled with depressurised methanol	No
PL1850.5	In Service	Suspended	Recover 2013	1 – Recovered		FTP	Central CSA C1A	Central Manifold M1C (Gas)	Hydraulic and Chemical cores filled with depressurised HW540, methanol line filled with depressurised methanol	No
PL1850.6	In Service	Suspended	Recover 2013	1 – Recovered		FTP	Central CSA C1A	Central Manifold M1C (Gas)	Hydraulic and Chemical cores filled with depressurised HW540, methanol line filled with depressurised methanol	No
PL1850.7	In Service	Suspended	Recover 2013	1 – Recovered		FTP	Central CSA C1A	Central Manifold M1C (Gas)	Hydraulic and Chemical cores filled with depressurised HW540, methanol line filled with depressurised methanol	No
PL1850.8	In Service	Suspended	Recover 2013	1 – Recovered		FTP	Central CSA C1A	Central Manifold M1C (Gas)	Hydraulic and Chemical cores filled with depressurised HW540, methanol line filled with depressurised methanol	No
PL1850.9	In Service	Suspended	Recover 2013	1 – Recovered		FTP	Central CSA C1A	Central Manifold M1C (Gas)	Hydraulic and Chemical cores filled with depressurised HW540, methanol line filled with depressurised methanol	No
PL1904 PL1982	In Service In Service	Suspended Suspended	Recover 2013 Suspended	1 – Recovered 4 – Returned to service	Riser and RET recovered 2013 Riser recovered 2013. WI jumper will be recovered and returned to shore; new WI jumper required.	Riser WI flowline	Schiehallion FPSO RET RT81 Schiehallion FPSO Riser (Hang Off)	Schiehallion FPSO Riser (Hang Off) Schiehall West WI Man M22A	Raw Seawater Inhibited Injection Quality Water	No No
PL1982JDW01	See comment				This pipeline was removed from the PWA by way of PWA variation 55/V/05. Request that DECC update records to reflect was made in PWA variation application issued to DECC in January 2013		N/A	N/A	N/A	
PL1982JDW02	See comment				This pipeline was removed from the PWA by way of PWA variation 55/V/05. Request that DECC update records to reflect was made in PWA variation application issued to DECC in January 2013		N/A	N/A	N/A	
PL1982JDW03	See comment				This pipeline was removed from the PWA by way of PWA variation 55/V/05. Request that DECC update records to reflect was made in PWA variation application issued to DECC in January 2013		N/A	N/A	N/A	
PL1983	See comment				This pipeline was removed from the PWA by way of PWA variation 55/V/05. Request that DECC update records to reflect was made in PWA variation application issued to DECC in January 2013		N/A	N/A	N/A	
PL2021JWP07/1	In Service	Suspended	Suspended	4 – Returned to service		Production jumper	West Production Tree WP07 (Production)	West Production Manifold M24	Inhibited injection quality water (50% Methanol)	No
PL2021JWP07/2	In Service	Suspended	Suspended	4 – Returned to service		Production jumper	West Production Tree WP07 (production/Test)	West Production Manifold M24	Inhibited injection quality water (50% Methanol)	No
PL2021JWP07/3 PL2022JWP13/1	In Service In Service	Suspended Suspended	Suspended Suspended	4 – Returned to service 4 – Returned to service		Production jumper Production jumper	West Production Manifold M24 West Production Tree WP13 (Production)	West Production Tree WP07 (Gas Lift) West Production Manifold M24	Depressurised residual gas Inhibited injection quality water (50% Methanol)	No No
PL2022JWP13/2	In Service	Suspended	Suspended	4 – Returned to service		Production jumper	West Production Tree WP13 (Production/Tes)	West Production Manifold M24	Inhibited injection quality water (50% Methanol)	No
PL2022JWP13/3 PL2023JWW11	In Service In Service	Suspended Suspended	Suspended Suspended	4 – Returned to service 4 – Returned to service		Production jumper WI jumper	West Production Manifold M24 West Water Inj Manifold M22A	West Production Tree WP13 (Gas Lift) West Water Inj Tree WW11	Depressurised residual gas Inhibited Injection Quality Water	No No
PL2024JWP07/1	In Service (see comment)	Suspended	Relocated 2014	3 – Repositioned	Confirmation of installation of this pipeline was included in a PWA variation application issued to DECC in January 2012. Relocated from WP13 to C21R in 2014	FTP	West CDA C21	West Production Tree WP13	Hydraulic and Chemical cores filled with depressurised HW540, methanol line filled with depressurised methanol	No
PL2024JWP07/10	In Service (see comment)	Suspended	Relocated 2014	3 – Repositioned	Relocated from WP13 to C21R in 2014	FTP	West CDA C21	West Production Tree WP13	Hydraulic and Chemical cores filled with depressurised HW540, methanol line filled with depressurised methanol	No

PWA 13/W/97 PIPELINE NUMBER	STATUS AS CURRENTLY KNOWN	STATUS AFTER FIELD SHUT IN	STATUS DURING FIELD SUSPENSION	STATUS WHEN FIELD FULLY RESTARTED	Comments	Type	From Location	To Location	Fill Medium	Trenched
PL2024JWP07/11	In Service (see comment)	Suspended	Relocated 2014	3 – Repositioned	Relocated from WP13 to C21R in 2014	FTP	West CDA C21	West Production Tree WP13	Hydraulic and Chemical cores filled with depressurised HW540, methanol line filled with depressurised methanol	No
PL2024JWP07/2	In Service (see comment)	Suspended	Relocated 2014	3 – Repositioned	Relocated from WP13 to C21R in 2014	FTP	West CDA C21	West Production Tree WP13	Hydraulic and Chemical cores filled with depressurised HW540, methanol line filled with depressurised methanol	No
PL2024JWP07/3	In Service (see comment)	Suspended	Relocated 2014	3 – Repositioned	Relocated from WP13 to C21R in 2014	FTP	West CDA C21	West Production Tree WP13	Hydraulic and Chemical cores filled with depressurised HW540, methanol line filled with depressurised methanol	No
PL2024JWP07/4	In Service (see comment)	Suspended	Relocated 2014	3 – Repositioned	Relocated from WP13 to C21R in 2014	FTP	West CDA C21	West Production Tree WP13	Hydraulic and Chemical cores filled with depressurised HW540, methanol line filled with depressurised methanol	No
PL2024JWP07/5	In Service (see comment)	Suspended	Relocated 2014	3 – Repositioned	Relocated from WP13 to C21R in 2014	FTP	West CDA C21	West Production Tree WP13	Hydraulic and Chemical cores filled with depressurised HW540, methanol line filled with depressurised methanol	No
PL2024JWP07/6	In Service (see comment)	Suspended	Relocated 2014	3 – Repositioned	Relocated from WP13 to C21R in 2014	FTP	West CDA C21	West Production Tree WP13	Hydraulic and Chemical cores filled with depressurised HW540, methanol line filled with depressurised methanol	No
PL2024JWP07/7	In Service (see comment)	Suspended	Relocated 2014	3 – Repositioned	Relocated from WP13 to C21R in 2014	FTP	West CDA C21	West Production Tree WP13	Hydraulic and Chemical cores filled with depressurised HW540, methanol line filled with depressurised methanol	No
PL2024JWP07/8	In Service (see comment)	Suspended	Relocated 2014	3 – Repositioned	Relocated from WP13 to C21R in 2014	FTP	West CDA C21	West Production Tree WP13	Hydraulic and Chemical cores filled with depressurised HW540, methanol line filled with depressurised methanol	No
PL2024JWP07/9	In Service (see comment)	Suspended	Relocated 2014	3 – Repositioned	Relocated from WP13 to C21R in 2014	FTP	West CDA C21	West Production Tree WP13	Hydraulic and Chemical cores filled with depressurised HW540, methanol line filled with depressurised methanol	No
PL2025JWW11/1	In Service	Suspended	Recover 2013	1 – Recovered		FTP	West CDA C21	West Water Inj Well WW16	Depressurised HW540	No
PL2025JWW11/10	In Service	Suspended	Recover 2013	1 – Recovered		FTP	West CDA C21	West Water Inj Well WW16	Depressurised HW540	No
PL2025JWW11/11	In Service	Suspended	Recover 2013	1 – Recovered		FTP	West CDA C21	West Water Inj Well WW16	Depressurised HW540	No
PL2025JWW11/12	In Service	Suspended	Recover 2013	1 – Recovered		FTP	West CDA C21	West Water Inj Well WW16	Depressurised HW540	No
PL2025JWW11/13	In Service	Suspended	Recover 2013	1 – Recovered		FTP	West CDA C21	West Water Inj Well WW16	Depressurised HW540	No
PL2025JWW11/2	In Service	Suspended	Recover 2013	1 – Recovered		FTP	West CDA C21	West Water Inj Well WW16	Depressurised HW540	No
PL2025JWW11/3	In Service	Suspended	Recover 2013	1 – Recovered		FTP	West CDA C21	West Water Inj Well WW16	Depressurised HW540	No
PL2025JWW11/4	In Service	Suspended	Recover 2013	1 – Recovered		FTP	West CDA C21	West Water Inj Well WW16	Depressurised HW540	No
PL2025JWW11/5	In Service	Suspended	Recover 2013	1 – Recovered		FTP	West CDA C21	West Water Inj Well WW16	Depressurised HW540	No
PL2025JWW11/6	In Service	Suspended	Recover 2013	1 – Recovered		FTP	West CDA C21	West Water Inj Well WW16	Depressurised HW540	No
PL2025JWW11/7	In Service	Suspended	Recover 2013	1 – Recovered		FTP	West CDA C21	West Water Inj Well WW16	Depressurised HW540	No
PL2025JWW11/8	In Service	Suspended	Recover 2013	1 – Recovered		FTP	West CDA C21	West Water Inj Well WW16	Depressurised HW540	No
PL2025JWW11/9	In Service	Suspended	Recover 2013	1 – Recovered		FTP	West CDA C21	West Water Inj Well WW16	Depressurised HW540	No
PL2141	In Service	Suspended	Suspended	2 – Disconnected and left in situ	Jumpers being recovered for onshore disposal.	Prod Flowline	West Prod Manifold M24	FPSO Riser RET RT81	Inhibited Injection quality Dyed Seawater	No
PL2167	In Service	Suspended	Suspended	4 – Returned to service		Gas flowline	FPSO FTA F8	Central FTA F18	Depressurised residual gas	No
PL2167J1	In Service	Suspended	Suspended	4 – Returned to service		Gas jumper	FPSO Manifold M31 (Gas)	FPSO FTA F8	Depressurised residual gas	No
PL2167J2	In Service	Suspended	Suspended	4 – Returned to service		Gas jumper	Central Manifold M8	Central Manifold M1J	Depressurised residual gas	No
PL2173	In Service	Suspended	Recover 2014	1 – Recovered		Production jumper	West Prod Tree WP14	West Prod Manifold M24	Inhibited injection quality water (50% Methanol)	No
PL2174	In Service	Suspended	Suspended	4 – Returned to service		WI jumper	West WI Tree WW10	West WI Tree WW12	Inhibited Injection Quality Water	No
PL2245	In Service	Suspended	Suspended	2 – Disconnected and left in situ	Riser recovered 2013. 3x production jumpers recovered 2013/14. Manifold returned to service.	Prod Flowline	NWAD Manifold M121	Schiehallion FPSO Riser (Hang Off)	Inhibited Injection quality Dyed Seawater	No
PL2246	Not installed	Not present			Approved production flowline to NWAD		N/A	N/A	N/A	
PL2247	In Service	Suspended	Suspended	4 – Returned to service		WI flowline	Schiehallion FPSO FTA F38	NWAD WI Manifold M122	Inhibited Injection Quality Water	No
PL2248	In Service	Suspended	Suspended	4 – Returned to service	One gas jumper relocated	Gas lift flowline	Schiehallion FPSO FTA F51	NWAD Manifold M121	Depressurised residual gas	No
PL2250	In Service	Suspended	Suspended	4 – Returned to service		Production jumper	NWAD Production Well FP02	NWAD Production Manifold M121	Inhibited injection quality water (50% Methanol)	No
PL2251	In Service	Suspended	Suspended	4 – Returned to service		WI jumper	NWAD WI Manifold M122	NWAD WI Well FW11	Inhibited Injection Quality Water	No
PL2252	In Service	Suspended	Suspended	4 – Returned to service		WI jumper	NWAD WI Manifold M122	NWAD WI Well FW12	Inhibited Injection Quality Water	No
PL2413	In Service	Suspended	Suspended	4 – Returned to service		WI jumper	West Water Inject Well WW11	West Water Injection Well WW16	Inhibited Injection Quality Water	No
PL2415	In Service	Suspended	Suspended	4 – Returned to service		Production jumper	Central Production Well CP04	Central Production Well CP23	Inhibited injection quality water (50% Methanol)	No
PL2419	In Service	Suspended	Suspended	4 – Returned to service		Production jumper	Central Production Well CP23	Central Production Manifold M1	Inhibited injection quality water (50% Methanol)	No
PL2842JM1J	In Service	Suspended	Suspended	4 – Returned to service		Gas jumper	Central Manifold M1	Central Manifold M1J	Depressurised residual gas	No
PL2843JM8	In Service	Suspended	Suspended	4 – Returned to service		Gas jumper	Central FTA F18	Central Manifold M8	Depressurised residual gas	No

PWA 13/W/97 PIPELINE NUMBER	STATUS AS CURRENTLY KNOWN	STATUS AFTER FIELD SHUT IN	STATUS DURING FIELD SUSPENSION	STATUS WHEN FIELD FULLY RESTARTED	Comments	Type	From Location	To Location	Fill Medium	Trenched
PLU1406JCP03/1	In Service	Suspended	Recover 2014	1 – Recovered		FTP	Central CSA C1D	Prod Tree CP03	Hydraulic and Chemical cores filled with depressurised HW540, methanol line filled with depressurised methanol	No
PLU1406JCP03/2	In Service	Suspended	Recover 2014	1 – Recovered		FTP	Central CSA C1D	Prod Tree CP03	Hydraulic and Chemical cores filled with depressurised HW540, methanol line filled with depressurised methanol	No
PLU1406JCP03/3	In Service	Suspended	Recover 2014	1 – Recovered		FTP	Central CSA C1D	Prod Tree CP03	Hydraulic and Chemical cores filled with depressurised HW540, methanol line filled with depressurised methanol	No
PLU1406JCP20/1	In Service	Suspended	Recover 2013	1 – Recovered		FTP	Central CSA C1D	Prod Tree CP20	Hydraulic and Chemical cores filled with depressurised HW540, methanol line filled with depressurised methanol	No
PLU1406JCP20/2	In Service	Suspended	Recover 2013	1 – Recovered		FTP	Central CSA C1D	Prod Tree CP20	Hydraulic and Chemical cores filled with depressurised HW540, methanol line filled with depressurised methanol	No
PLU1406JCP20/3	In Service	Suspended	Recover 2013	1 – Recovered		FTP	Central CSA C1D	Prod Tree CP20	Hydraulic and Chemical cores filled with depressurised HW540, methanol line filled with depressurised methanol	No
PLU1406JCP21/1	In Service	Suspended	Recover 2013	1 – Recovered		FTP	Central CSA C1D	Prod Tree CP21	Hydraulic and Chemical cores filled with depressurised HW540, methanol line filled with depressurised methanol	No
PLU1406JCP21/2	In Service	Suspended	Recover 2013	1 – Recovered		FTP	Central CSA C1D	Prod Tree CP21	Hydraulic and Chemical cores filled with depressurised HW540, methanol line filled with depressurised methanol	No
PLU1406JCP21/3	In Service	Suspended	Recover 2013	1 – Recovered		FTP	Central CSA C1D	Prod Tree CP21	Hydraulic and Chemical cores filled with depressurised HW540, methanol line filled with depressurised methanol	No
PLU1410JCP08/1	In Service	Suspended	Relocate 2014	3 – Repositioned	Relocated from C1P to C1PR in 2014	FTP	Central CDT C1P	Production Tree CP22	Hydraulic and Chemical cores filled with depressurised HW540, methanol line filled with depressurised methanol	No
PLU1410JCP08/2	In Service	Suspended	Relocate 2014	3 – Repositioned	As above	FTP	Central CDT C1P	Production Tree CP22	Hydraulic and Chemical cores filled with depressurised HW540, methanol line filled with depressurised methanol	No
PLU1410JCP08/3	In Service	Suspended	Relocate 2014	3 – Repositioned	As above	FTP	Central CDT C1P	Production Tree CP22	Hydraulic and Chemical cores filled with depressurised HW540, methanol line filled with depressurised methanol	No
PLU1889	Out of use	Suspended	Suspended	2 – Disconnected and left in situ	Requires application for entry into IPR		FPSO CDA U61R	FPSO CDA U60R	Hydraulic cores filled with HW540, Chemical cores filled with CI/ SI, methanol line filled with methanol, Spare lines filled with Aqua Glycol. All lines depressurised.	No
PLU1984	See comment				This pipeline was removed from the PWA by way of PWA variation 55/V/05. Request that DECC update records to reflect was made in PWA variation application issued to DECC in January 2013		N/A	N/A	N/A	
PLU1984JDP01	See comment				This pipeline was removed from the PWA by way of PWA variation 55/V/05. Request that DECC update records to reflect was made in PWA variation application issued to DECC in January 2013		N/A	N/A	N/A	
PLU1984JDP02	See comment				This pipeline was removed from the PWA by way of PWA variation 55/V/05. Request that DECC update records to reflect was made in PWA variation application issued to DECC in January 2013		N/A	N/A	N/A	
PLU2175	In Service	Suspended	Relocate 2013	3 – Repositioned	Relocated from C21 to C21R (Parked 2013 - Hooked up 2014)	FTP	West CDA21	West Prod well WP14	Hydraulic and Chemical cores filled with depressurised HW540, methanol line filled with depressurised methanol	No
PLU2176	In Service	Suspended	Recover 2014	1 – Recovered		FTP	West CDA C23	West CDA C21	Hydraulic and Chemical cores filled with depressurised HW540, methanol line filled with depressurised methanol	No
PLU2177	In Service	Suspended	Suspended	4 – Returned to service		FTP	West WI Well WW10	West WI Well WW12	Depressurised HW540	No
PLU2178	In Service	Suspended	Suspended	4 – Returned to service		FTP	West COCOT CDA C22	West WI Well WW04 COCOT	Depressurised HW540	No
PLU2179	In Service	Suspended	Suspended	4 – Returned to service		FTP	West COCOT CDA C22	West WI Well WW05 COCOT	Depressurised HW540	No

PWA 13/W/97 PIPELINE NUMBER	STATUS AS CURRENTLY KNOWN	STATUS AFTER FIELD SHUT IN	STATUS DURING FIELD SUSPENSION	STATUS WHEN FIELD FULLY RESTARTED	Comments	Type	From Location	To Location	Fill Medium	Trenched
PLU2180	In Service	Suspended	Suspended	4 – Returned to service		FTP	West COCOT CDA C22	West WI Well WW06 COCOT	Depressurised HW540	No
PLU2181	In Service	Suspended	Suspended	4 – Returned to service		FTP	West COCOT CDA C22	West WI Well WW08 COCOT	Depressurised HW540	No
PLU2182	In Service	Suspended	Suspended	1 – Recovered		FTP	West COCOT CDA C22	West WI Well WW09 MARS Unit	Depressurised HW540	No
PLU2183	In Service	Suspended	Recover 2013	1 – Recovered		FTP	West CDA C21	West COCOT CDA C22	Depressurised HW540	No
PLU2241	In Service	Suspended	Recover 2013	1 – Recovered		Dynamic umbilical	Schiehallion FPSO	SECU DUTA D3	Depressurised HW540	No
PLU2242	In Service	Suspended	Suspended	2 – Disconnected and left in situ	One FTP recovered 2013 Jumper DUTA D3 to UET U13 to be recovered and returned to service	Static umbilical	SECU DUTA D3	Central UET U12	Hydraulic and Chemical cores filled with depressurised HW540, methanol line filled with depressurised methanol	No
PLU2243	In Service	Suspended	Suspended	4 – Returned to service	One FTP relocated, one FTP recovered 2013	Static umbilical	SECU DUTA D3	West CDA C23	Hydraulic and Chemical cores filled with depressurised HW540, methanol line filled with depressurised methanol	No
PLU2244	In Service	Suspended	Suspended	4 – Returned to service	One FTP relocated	Static umbilical	SECU DUTA D3	NWAD CDA C123	Hydraulic and Chemical cores filled with depressurised HW540, methanol line filled with depressurised methanol	No
PLU2249	Part installed (see comment)	Suspended	See comment		Only the SPU frame was installed. Agreed revision to reflect this was included in PWA variation issued to DECC in January 2013		Central UTA U15 (Installed)	N/A	Hydraulic and Chemical cores filled with depressurised HW540, methanol line filled with depressurised methanol	No
PLU2253	Not installed (see comment)	Not present			Not installed. Removal from PWA requested via PWA variation issued to DECC January 2013.		N/A	N/A	N/A	
PLU2254	In Service	Suspended	Recover 2014	1 – Recovered		FTP	NWAD CDA C123	NWAD CDA C122	Hydraulic and Chemical cores filled with depressurised HW540, methanol line filled with depressurised methanol	No
PLU2255	In Service	Suspended	Relocated 2013	3 – Repositioned	Relocated from C122 to C121 in 2014	FTP	NWAD CDA C122	NWAD Production Well FP02	Hydraulic and Chemical cores filled with depressurised HW540, methanol line filled with depressurised methanol	No
PLU2256	In Service	Suspended	Relocated 2013	3 – Repositioned	Relocated from C122 to C122R in 2014	FTP	NWAD CDA C122	NWAD WI Well FW11	Depressurised HW540	No
PLU2257	In Service	Suspended	Relocated 2013	3 – Repositioned	Relocated from C122 to C122R in 2014	FTP	NWAD CDA C122	NWAD WI Well FW12	Depressurised HW540	No
PLU2258	Out of use	Suspended	Suspended	2 – Disconnected and left in situ	Already in IPR	FTP	NWAD WI Well FW11	NWAD Production Manifold M121	Depressurised HW540	No
PLU2259	Not installed (see comment)	Not present			Not installed. Removal from PWA requested via PWA variation issued to DECC January 2013.		N/A	N/A	N/A	
PLU2260	In Service	Suspended	Recover 2013	1 – Recovered		FTP	Central UET U12	Central CDT C1P	Hydraulic and Chemical cores filled with depressurised HW540, methanol line filled with depressurised methanol	No
PLU2261	In Service	Suspended	Recover 2013	1 – Recovered		FTP	Central UET U12	Central CDT C1P	Hydraulic and Chemical cores filled with depressurised HW540, methanol line filled with depressurised methanol	No
PLU2262	Not installed (see comment)	Not present			Not installed. Removal from PWA requested via PWA variation issued to DECC January 2013.		N/A	N/A	N/A	
PLU2263	Not installed (see comment)	Not present			Not installed. Removal from PWA requested via PWA variation issued to DECC January 2013.		N/A	N/A	N/A	
PLU2264	Not installed (see comment)	Not present			Not installed. Removal from PWA requested via PWA variation issued to DECC January 2013.		N/A	N/A	N/A	
PLU2265	Not installed (see comment)	Not present			Not installed. Removal from PWA requested via PWA variation issued to DECC January 2013.		N/A	N/A	N/A	
PLU2266	Not installed (see comment)	Not present			Not installed. Removal from PWA requested via PWA variation issued to DECC January 2013.		N/A	N/A	N/A	
PLU2267	Not installed (see comment)	Not present			Not installed. Removal from PWA requested via PWA variation issued to DECC January 2013.		N/A	N/A	N/A	
PLU2268	Not installed (see comment)	Not present			Not installed. Removal from PWA requested via PWA variation issued to DECC January 2013.		N/A	N/A	N/A	
PLU2269	Not installed (see comment)	Not present			Not installed. Removal from PWA requested via PWA variation issued to DECC January 2013.		N/A	N/A	N/A	
PLU2270	In Service	Suspended	Recover 2013	1 – Recovered		FTP	Central CDT C1P	Central WI Well CW11	Depressurised HW540	No
PLU2278	In Service	Suspended	Recover 2013	1 – Recovered		FTP	West CDA C23	West WI Well WW06	Depressurised HW540	No
PLU2279	In Service	Suspended	Recover 2013	1 – Recovered		FTP	West CDA C23	West WI Well WW08	Depressurised HW540	No
PLU2280	In Service	Suspended	Recover 2013	1 – Recovered		FTP	Central CDT C1P	Central WI Well CW10	Depressurised HW540	No
PLU2281	In Service	Suspended	Suspended	4 – Returned to service		FTP	Central WI Well CW11	Central WI Well CW12	Depressurised HW540	No
PLU2282	In Service	Suspended	Recover 2013	1 – Recovered		FTP	Central CDT C1P	Central WI Well CW17	Depressurised HW540	No
PLU2283	Not installed (see comment)	Not present			Not installed. Removal from PWA requested via PWA variation issued to DECC January 2013.		N/A	N/A	N/A	
PLU2414	Not installed (see comment)	Not present			Not installed. Removal from PWA requested via PWA variation issued to DECC January 2013.		N/A	N/A	N/A	
PLU2416	Not installed (see comment)	Not present			Not installed. Removal from PWA requested via PWA variation issued to DECC January 2013.		N/A	N/A	N/A	
PLU2417	Not installed (see comment)	Not present			Not installed. Removal from PWA requested via PWA variation issued to DECC January 2013.		N/A	N/A	N/A	
PLU2420	In Service	Suspended	Recover 2013	1 – Recovered		FTP	Central CSA C1A	Central Production Well CP23	Hydraulic and Chemical cores filled with depressurised HW540, methanol line filled with depressurised methanol	No

PWA 13/W/97 PIPELINE NUMBER	STATUS AS CURRENTLY KNOWN	STATUS AFTER FIELD SHUT IN	STATUS DURING FIELD SUSPENSION	STATUS WHEN FIELD FULLY RESTARTED	Comments	Type	From Location	To Location	Fill Medium	Trenched
PLU2503	In Service	Suspended	Recover 2013	1 – Recovered		FTP	West UTA U23	West UET U21	Hydraulic and Chemical cores filled with depressurised HW540, methanol line filled with depressurised methanol	No
PLU2549	In Service	Suspended	Suspended	4 – Returned to service		FTP	NWAD W I Well FW11 West W I Well WW09 Dummy SCM Central UET U12	NWAD Production Manifold M121 West W I Well WW09 MARS Unit Central CDT C1P	Depressurised HW540	No
PLU2673	In Service	Suspended	Suspended	4 – Returned to service		FTP			Depressurised HW540	No
PLU2734	In Service	Suspended	Recover 2013	1 – Recovered		FTP			Hydraulic and Chemical cores filled with depressurised HW540, methanol line filled with depressurised methanol	No
PLU2844	In Service	Suspended	Recover 2013	1 – Recovered		FTP	Central C1D	Central Manifold M1J	Hydraulic and Chemical cores filled with depressurised HW540, methanol line filled with depressurised methanol	No
PLU2981	Installed 2012	Suspended	Suspended	4 – Returned to service	Added via PWA variation 113-V-12	FTP	CSA C1A	CP02	Hydraulic and Chemical cores filled with depressurised HW540, methanol line filled with depressurised methanol	No
PLU2982	Installed 2012	Suspended	Suspended	4 – Returned to service	Added via PWA variation 113-V-12	FTP	CDT C1P	CP05	Hydraulic and Chemical cores filled with depressurised HW540, methanol line filled with depressurised methanol	No
PLU3056	In Service	Suspended	Suspended	4 – Returned to service	Previously under FEPA exemption, and requested via PWA variation QSA-9000-L-T-9201	FTP	West Production Tree WP01	West Manifold M21	Depressurised HW540	No
PLU3057	In Service	Suspended	Suspended	4 – Returned to service	Previously under FEPA exemption, and requested via PWA variation QSA-9000-L-T-9201	FTP	West Production Tree WP02	West Manifold M21	Depressurised HW540	No
PLU3058	In Service	Suspended	Suspended	4 – Returned to service	Previously under FEPA exemption, and requested via PWA variation QSA-9000-L-T-9201	FTP	West Water Injection Tree WW06	West Water Injection Tree WW04	Depressurised HW540	No
PLU3059	In Service	Suspended	Recover 2013	1 – Recovered	Previously under FEPA exemption, and requested via PWA variation QSA-9000-L-T-9201	FTP	West Water Injection Tree WW06	West Water Injection Tree WW05	Depressurised HW540	No
PLU3060	In Service	Suspended	Suspended	4 – Returned to service	Previously under FEPA exemption, and requested via PWA variation QSA-9000-L-T-9201	FTP	West Water Injection Tree WW08	West Water Injection Tree WW09	Depressurised HW540	No
PLU3061	In Service	Suspended	Recover 2013	1 – Recovered	Previously under FEPA exemption, and requested via PWA variation QSA-9000-L-T-9201	FTP	West Water Injection Tree WW08	West Water Injection Tree WW10	Depressurised HW540	No
PLU3062	In Service	Suspended	Recover 2013	1 – Recovered	Previously under FEPA exemption, and requested via PWA variation QSA-9000-L-T-9201	FTP	UTA U50	North Water Injection Tree NW01	Depressurised HW540	No
PLU3063	In Service	Suspended	Suspended	4 – Returned to service	Previously under FEPA exemption, and requested via PWA variation QSA-9000-L-T-9201	FTP	North Water Injection Tree NW01	North Water Injection Tree NW02	Depressurised HW540	No
PLU3064	In Service	Suspended	Suspended	4 – Returned to service	Previously under FEPA exemption, and requested via PWA variation QSA-9000-L-T-9201	FTP	North Water Injection Tree NW01	North Water Injection Tree NW03	Depressurised HW540	No
PLU3065	In Service	Suspended	Recover 2013	1 – Recovered	Previously under FEPA exemption, and requested via PWA variation QSA-9000-L-T-9201	FTP	Central Water Injection Tree CW17	Central Water Injection Tree CW18	Depressurised HW540	No
PLU3066	In Service	Suspended	Suspended	4 – Returned to service	Previously under FEPA exemption, and requested via PWA variation QSA-9000-L-T-9201	FTP	Central Water Injection Tree CW17	Central Water Injection Tree CW19	Depressurised HW540	No
PLU3067	In Service	Suspended	Suspended	4 – Returned to service	Previously under FEPA exemption, and requested via PWA variation QSA-9000-L-T-9201	FTP	Central Water Injection Tree CW10	Central Water Injection Tree CW13	Depressurised HW540	No
PLU3068	In Service	Suspended	Recover 2013	1 – Recovered	Previously under FEPA exemption, and requested via PWA variation QSA-9000-L-T-9201	FTP	CSA C1A	Central Water Injection Tree CW15	Depressurised HW540	No
PLU3069	In Service	Suspended	Suspended	4 – Returned to service	Previously under FEPA exemption, and requested via PWA variation QSA-9000-L-T-9201	FTP	Central Water Injection Tree CW15	Central Water Injection Tree CW16	Depressurised HW540	No
PLU3070	Out of use	Suspended	Suspended	2 – Disconnected and left in situ	Previously under FEPA exemption, and requested via PWA variation QSA-9000-L-T-9201. Note: This FTP is not operational and has been replaced by PLU2270. It currently sits on the seabed but is disconnected and its stabplates have been removed	FTP	CDT C1	Central Water Injection Tree CW11	Depressurised HW540	No
PLU3071	In Service	Suspended	Suspended	4 – Returned to service	Previously under FEPA exemption, and requested via PWA variation QSA-9000-L-T-9201	FTP	OSB B1	Central Production Tree CP01	Hydraulic and Chemical cores filled with depressurised HW540, methanol line filled with depressurised methanol	No
PLU3072	In Service	Suspended	Recover 2013	1 – Recovered	Previously under FEPA exemption, and requested via PWA variation QSA-9000-L-T-9201	FTP	DUTA D1	DUTA D1	Hydraulic and Chemical cores filled with depressurised HW540, methanol line filled with depressurised methanol	No

PWA 13/W/97 PIPELINE NUMBER	STATUS AS CURRENTLY KNOWN	STATUS AFTER FIELD SHUT IN	STATUS DURING FIELD SUSPENSION	STATUS WHEN FIELD FULLY RESTARTED	Comments	Type	From Location	To Location	Fill Medium	Trenched
FEPA EXEMPTION JUMPERS										
FPSO										
D1 Bypass FTP Jumper*	Out of use		Recover 2013	1 – Recovered			D1	U61R		
West										
C1 – laydown location (discol	Out of use		Recover 2013	1 – Recovered			C1	Laydown location		

Appendix II

Loyal Pipelines

PWA 14/W/97 PIPELINE NUMBER	STATUS AS CURRENTLY KNOWN	STATUS AFTER FIELD SHUT IN	STATUS DURING FIELD SUSPENSION	STATUS WHEN FIELD FULLY RESTARTED	Comments	Type	From Location	To Location	Fill Medium	Trenched
PL1360	In Service	Suspended	Suspended	2 – Disconnected and left in situ	Riser recovered 2013 for onshore disposal and replaced. Production jumper and manifolds returned to service.	Production flowline and riser	Production Manifold M41	Schiehallion FPSO Riser (Hang Off)	Inhibited Injection quality Seawater	Dyed No
PL1361	In Service	Suspended	Suspended	2 – Disconnected and left in situ	Riser and jumper recovered 2013 for onshore disposal. Manifolds returned to service.	Production flowline and riser	Production Manifold M41	Schiehallion FPSO Riser (Hang Off)	Inhibited Injection quality Seawater	Dyed No
PL1362/1	In Service	Suspended	Suspended	4 – Returned to service		Production jumper	Production Tree LP01	Prod Manifold M41 (Production)	Inhibited injection quality water (50% Methanol)	No
PL1362/2	In Service	Suspended	Suspended	4 – Returned to service		Production jumper	Production Tree LP01	Prod Manifold M41 (Production/Test)	Inhibited injection quality water (50% Methanol)	No
PL1362/3	In Service	Suspended	Suspended	4 – Returned to service		Production jumper	Production Tree LP01	Prod Manifold M41 (Gas Lift)	Depressurised residual gas	No
PL1363/1	In Service	Suspended	Suspended	4 – Returned to service		Production jumper	Production Tree LP02	Prod Manifold M41 (Production)	Inhibited injection quality water (50% Methanol)	No
PL1363/2	In Service	Suspended	Suspended	4 – Returned to service		Production jumper	Production Tree LP02	Prod Manifold M41 (Production/Test)	Inhibited injection quality water (50% Methanol)	No
PL1363/3	In Service	Suspended	Suspended	4 – Returned to service		Production jumper	Production Tree LP02	Prod Manifold M41 (Gas Lift)	Depressurised residual gas	No
PL1364/1	In Service	Suspended	Suspended	4 – Returned to service		Production jumper	Production Manifold M43	Prod Manifold M41 (Production)	Inhibited injection quality water (50% Methanol)	No
PL1364/2	In Service	Suspended	Suspended	4 – Returned to service		Production jumper	Production Manifold M43	Prod Manifold M41 (Production/Test)	Inhibited injection quality water (50% Methanol)	No
PL1364/3	In Service	Suspended	Suspended	4 – Returned to service		Production jumper	Production Manifold M43	Prod Manifold M41 (Gas Lift)	Depressurised residual gas	No
PL1365	In Service	Suspended	Suspended	4 – Returned to service		Gas flowline and jumper	Schiehallion FPSO Riser (Hang Off)	Production Manifold M41	Depressurised residual gas	No
PL1366	In Service	Suspended	Suspended	4 – Returned to service		WI flowline	North Water Inj Manifold M61	Loyal Water Inj Manifold M42	Inhibited Injection quality Seawater	No
PL1367/1	In Service	Suspended	Suspended	4 – Returned to service		WI jumper	Water Inj Manifold M42	Water Inj Tree LW04A	Inhibited Injection quality Seawater	No
PL1367/2	In Service	Suspended	Suspended	4 – Returned to service		WI jumper	Water Inj Manifold M42	Water Inj Tree LW04A	Inhibited Injection quality Seawater	No
PL1367/3	In Service	Suspended	Suspended	4 – Returned to service		WI jumper	Water Inj Manifold M42	Water Inj Tree LW04A	Inhibited Injection quality Seawater	No
PL1368/1	In Service	Suspended	Suspended	4 – Returned to service		WI jumper	Water Inj Manifold M42	Water Inj Tree LW05	Inhibited Injection quality Seawater	No
PL1368/2	In Service	Suspended	Suspended	4 – Returned to service		WI jumper	Water Inj Manifold M42	Water Inj Tree LW05	Inhibited Injection quality Seawater	No
PL1368/3	In Service	Suspended	Suspended	4 – Returned to service		WI jumper	Water Inj Manifold M42	Water Inj Tree LW05	Inhibited Injection quality Seawater	No
PL1369/1	In Service	Suspended	Suspended	4 – Returned to service		WI jumper	Water Inj Manifold M42	Water Inj Tree LW06	Inhibited Injection quality Seawater	No
PL1369/2	In Service	Suspended	Suspended	4 – Returned to service		WI jumper	Water Inj Manifold M42	Water Inj Tree LW06	Inhibited Injection quality Seawater	No
PL1369/3	In Service	Suspended	Suspended	4 – Returned to service		WI jumper	Water Inj Manifold M42	Water Inj Tree LW06	Inhibited Injection quality Seawater	No
PL1370/1	In Service	Suspended	Recover 2013	1 – Recovered	Onshore disposal	FTP	Schiehallion North UTA U50	Schiehallion North UET U41	Hydraulic and chemical cores filled with depressurised HW540. Methanol core filled with depressurised methanol.	No
PL1370/2	In Service	Suspended	Recover 2013	1 – Recovered	Onshore disposal	FTP	Schiehallion North UTA U50	Schiehallion North UET U41	Hydraulic and chemical cores filled with depressurised HW540. Methanol core filled with depressurised methanol.	No
PL1370/3	In Service	Suspended	Recover 2013	1 – Recovered	Onshore disposal	FTP	Schiehallion North UTA U50	Schiehallion North UET U41	Hydraulic and chemical cores filled with depressurised HW540. Methanol core filled with depressurised methanol.	No
PL1370/4	In Service	Suspended	Recover 2013	1 – Recovered	Onshore disposal	FTP	Schiehallion North UTA U50	Schiehallion North UET U41	Hydraulic and chemical cores filled with depressurised HW540. Methanol core filled with depressurised methanol.	No

PWA 14/W/97 PIPELINE NUMBER	STATUS AS CURRENTLY KNOWN	STATUS AFTER FIELD SHUT IN	STATUS DURING FIELD SUSPENSION	STATUS WHEN FIELD FULLY RESTARTED	Comments	Type	From Location	To Location	Fill Medium	Trenched
PL1370/5	In Service	Suspended	Recover 2013	1 – Recovered	Onshore disposal	FTP	Schiehallion North UTA U50	Schiehallion North UET U41	Hydraulic and chemical cores filled with depressurised HW540. Methanol core filled with depressurised methanol.	No
PL1371/1	In Service	Suspended	Suspended	2 – Disconnected and left in situ		Static umbilical	Schiehallion North UET U41	Schiehallion Loyal UUTA	TBC	No
PL1371/2	In Service	Suspended	Suspended	2 – Disconnected and left in situ		Static umbilical	Schiehallion North UET U41	Schiehallion Loyal UUTA	TBC	No
PL1371/3	In Service	Suspended	Suspended	2 – Disconnected and left in situ		Static umbilical	Schiehallion North UET U41	Schiehallion Loyal UUTA	TBC	No
PL1371/4	In Service	Suspended	Suspended	2 – Disconnected and left in situ		Static umbilical	Schiehallion North UET U41	Schiehallion Loyal UUTA	TBC	No
PL1371/5	In Service	Suspended	Suspended	2 – Disconnected and left in situ		Static umbilical	Schiehallion North UET U41	Schiehallion Loyal UUTA	TBC	No
PL1372/1	In Service	Suspended	Recover 2013	1 – Recovered		FTP	UUTA UNIV	Production Tree LP01	Hydraulic and chemical cores filled with depressurised HW540. Methanol core filled with depressurised methanol.	No
PL1372/2	In Service	Suspended	Recover 2013	1 – Recovered		FTP	UUTA UNIV	Production Tree LP01	Hydraulic and chemical cores filled with depressurised HW540. Methanol core filled with depressurised methanol.	No
PL1372/3	In Service	Suspended	Recover 2013	1 – Recovered		FTP	UUTA UNIV	Production Tree LP01	Hydraulic and chemical cores filled with depressurised HW540. Methanol core filled with depressurised methanol.	No
PL1373/1	In Service	Suspended	Recover 2013	1 – Recovered		FTP	UUTA UNIV	Production Tree LP02	Hydraulic and chemical cores filled with depressurised HW540. Methanol core filled with depressurised methanol.	No
PL1373/2	In Service	Suspended	Recover 2013	1 – Recovered		FTP	UUTA UNIV	Production Tree LP02	Hydraulic and chemical cores filled with depressurised HW540. Methanol core filled with depressurised methanol.	No
PL1373/3	In Service	Suspended	Recover 2013	1 – Recovered		FTP	UUTA UNIV	Production Tree LP02	Hydraulic and chemical cores filled with depressurised HW540. Methanol core filled with depressurised methanol.	No
PL1374/1	In Service	Suspended	Recover 2013	1 – Recovered		FTP	UUTA UNIV	Production Tree LP03	Hydraulic and chemical cores filled with depressurised HW540. Methanol core filled with depressurised methanol.	No
PL1374/2	In Service	Suspended	Recover 2013	1 – Recovered		FTP	UUTA UNIV	Production Tree LP03	Hydraulic and chemical cores filled with depressurised HW540. Methanol core filled with depressurised methanol.	No
PL1374/3	In Service	Suspended	Recover 2013	1 – Recovered		FTP	UUTA UNIV	Production Tree LP03	Hydraulic and chemical cores filled with depressurised HW540. Methanol core filled with depressurised methanol.	No
PL2016.1(JLP03)	In Service	Suspended	Suspended	4 – Returned to service		Production jumper	Production Tree LP03	Production Manifold M43	Inhibited injection quality water (50% Methanol)	No
PL2016.2(JLP03)	In Service	Suspended	Suspended	4 – Returned to service		Production jumper	Production Tree LP03	Production Manifold M43	Inhibited injection quality water (50% Methanol)	No
PL2016.3(JLP03) PL2017.1(JLP07)	In Service In Service	Suspended Suspended	Suspended Suspended	4 – Returned to service 1 – Recovered	Recovered 2018	Production jumper Production jumper	Production Tree LP03 Production Tree LP07	Production Manifold M43 Production Manifold M43	Depressurised residual gas Inhibited injection quality water (50% Methanol)	No No

PWA 14/W/97 PIPELINE NUMBER	STATUS AS CURRENTLY KNOWN	STATUS AFTER FIELD SHUT IN	STATUS DURING FIELD SUSPENSION	STATUS WHEN FIELD FULLY RESTARTED	Comments	Type	From Location	To Location	Fill Medium	Trenched
PL2017.2(JLP07)	In Service	Suspended	Suspended	1 – Recovered	Recovered 2018	Production jumper	Production Tree LP07	Production Manifold M43	Inhibited injection quality water (50% Methanol)	No
PL2017.3(JLP07)	In Service	Suspended	Suspended	1 – Recovered	Recovered 2018	Production jumper FTP	Production Tree LP07 UUTA UNIV	Production Manifold M43 Production Tree LP07	Depressurised residual gas Hydraulic and chemical cores No filled with depressurised HW540. Methanol core filled with depressurised methanol.	No
PL2018.1(JLP07)	In Service	Suspended	Recover 2013	1 – Recovered						
PL2018.2(JLP07)	In Service	Suspended	Recover 2013	1 – Recovered		FTP	UUTA UNIV	Production Tree LP07	Hydraulic and chemical cores No filled with depressurised HW540. Methanol core filled with depressurised methanol.	No
PL2018.3(JLP07)	In Service	Suspended	Recover 2013	1 – Recovered		FTP	UUTA UNIV	Production Tree LP07	Hydraulic and chemical cores No filled with depressurised HW540. Methanol core filled with depressurised methanol.	No
PL2018.4(JLP07)	In Service	Suspended	Recover 2013	1 – Recovered		FTP	UUTA UNIV	Production Tree LP07	Hydraulic and chemical cores No filled with depressurised HW540. Methanol core filled with depressurised methanol.	No
PL2018.5(JLP07)	In Service	Suspended	Recover 2013	1 – Recovered		FTP	UUTA UNIV	Production Tree LP07	Hydraulic and chemical cores No filled with depressurised HW540. Methanol core filled with depressurised methanol.	No
PL2018.6(JLP07)	In Service	Suspended	Recover 2013	1 – Recovered		FTP	UUTA UNIV	Production Tree LP07	Hydraulic and chemical cores No filled with depressurised HW540. Methanol core filled with depressurised methanol.	No
PL2018.7(JLP07)	In Service	Suspended	Recover 2013	1 – Recovered		FTP	UUTA UNIV	Production Tree LP07	Hydraulic and chemical cores No filled with depressurised HW540. Methanol core filled with depressurised methanol.	No
PL2018.8(JLP07)	In Service	Suspended	Recover 2013	1 – Recovered		FTP	UUTA UNIV	Production Tree LP07	Hydraulic and chemical cores No filled with depressurised HW540. Methanol core filled with depressurised methanol.	No
PL2018.9(JLP07)	In Service	Suspended	Recover 2013	1 – Recovered		FTP	UUTA UNIV	Production Tree LP07	Hydraulic and chemical cores No filled with depressurised HW540. Methanol core filled with depressurised methanol.	No
PL2019.1(JLW10)	In Service	Suspended	Recover 2013	1 – Recovered		FTP	UUTA UNIV	Water Injection Tree LW10	Depressurised HW540	No
PL2019.2(JLW10)	In Service	Suspended	Recover 2013	1 – Recovered		FTP	UUTA UNIV	Water Injection Tree LW10	Depressurised HW540	No
PL2019.3(JLW10)	In Service	Suspended	Recover 2013	1 – Recovered		FTP	UUTA UNIV	Water Injection Tree LW10	Depressurised HW540	No
PL2019.4(JLW10)	In Service	Suspended	Recover 2013	1 – Recovered		FTP	UUTA UNIV	Water Injection Tree LW10	Depressurised HW540	No
PL2019.5(JLW10)	In Service	Suspended	Recover 2013	1 – Recovered		FTP	UUTA UNIV	Water Injection Tree LW10	Depressurised HW540	No
PL2019.6(JLW10)	In Service	Suspended	Recover 2013	1 – Recovered		FTP	UUTA UNIV	Water Injection Tree LW10	Depressurised HW540	No
PL2020(JLW10)	In Service	Suspended	Recover 2014	1 – Recovered		WI jumper	Water Injection manifold M42	Water Injection Tree LW10	Depressurised HW540	No
PLU2059	In Service	Suspended	Recover 2013	1 – Recovered		FTP	Prod Tree LP07	Water Injection Tree LW04	Depressurised HW540	No
PLU2060	In Service	Suspended	Suspended	4 – Returned to service		FTP	Prod Tree LP02	Water Injection Tree LW05	Depressurised HW540	No
PLU2061	In Service	Suspended	Suspended	4 – Returned to service		FTP	Water Injection Tree LW10	Water Injection Tree LW10	Depressurised HW540	No
PLU2934	Out of use	Suspended - ends cut	Suspended	2 – Disconnected and left in situ	Added via PWA variation 88-V-12. Cut and left in place.	FTP	Production Tree LP03	Production Manifold M41	Hydraulic and chemical cores No filled with depressurised HW540. Methanol core filled with depressurised methanol.	No

PWA 14/W/97 PIPELINE NUMBER	STATUS AS CURRENTLY KNOWN	STATUS AFTER FIELD SHUT IN	STATUS DURING FIELD SUSPENSION	STATUS WHEN FIELD FULLY RESTARTED	Comments	Type	From Location	To Location	Fill Medium	Trenched
PLU2935	Installed 2012	Suspended	Suspended	4 – Returned to service	Added via PWA variation 88-V-13	FTP	Production Tree LP03	Production Manifold M41	Hydraulic and chemical cores filled with depressurised HW540. Methanol core filled with depressurised methanol.	No
PLU3052	In Service	Suspended	Suspended	4 – Returned to service	Previously under FEPA exemption, and requested via PWA variation QSA-9000-L-T-9202	FTP	Production Tree LP01	Production Manifold M41	Hydraulic and chemical cores filled with depressurised HW540. Methanol core filled with depressurised methanol.	No
PLU3053	In Service	Suspended	Recover 2013	1 – Recovered	Previously under FEPA exemption, and requested via PWA variation QSA-9000-L-T-9202	FTP	UUTA UNIV	Water Injection Tree LW04	Depressurised HW540	No
PLU3054	In Service	Suspended	Suspended	4 – Returned to service	Previously under FEPA exemption, and requested via PWA variation QSA-9000-L-T-9202	FTP	Water Injection Tree LW04	Water Injection Tree LW05	Depressurised HW540	No
PLU3055	In Service	Suspended	Recover 2013	1 – Recovered	Previously under FEPA exemption, and requested via PWA variation QSA-9000-L-T-9202	FTP	Water Injection Tree LW04	Water Injection Tree LW06	Depressurised HW540	No

Appendix III
WOSPS Pipelines

PWA 5/W/01 PIPELINE NUMBER	STATUS AS CURRENTLY KNOWN	STATUS AFTER FIELD SHUT IN	STATUS DURING FIELD SUSPENSION	STATUS WHEN FIELD FULLY RESTARTED	Comments	Type	From Location	To Location	Fill Medium	Trenched
PL1759	In service	Suspended	Suspended	4 – Returned to service		Gas disposal flowline	Schiehallion Central Gas manifold M1C	Foinaven Gas Disposal Well	Import/Export Gas	No
PL1760	In service	Suspended	Suspended	4 – Returned to service		Gas export flowline	Schiehallion Gas manifold M1C	WOS PLEM	Import/Export Gas	No
PL1761	In service	In service	In service	4 – Returned to service	Remains in service throughout	Gas export flowline	WOS PLEM	Sullom Voe Terminal	Import/Export Gas	No
PL1762	In service	In service	In service	4 – Returned to service	Remains in service throughout	Gas export flowline	Sullom Voe Terminal	Magnus	Import/Export Gas	No