



# Beacon Wind Project Fact Sheet

bp is the 100% owner and developer of the Beacon Wind project, which is comprised of a combined area of 128,000 acres in federal waters between Cape Cod, Massachusetts, and Long Island, New York. The combined potential generative capacity of the project is approximately 2.6 gigawatts which has the potential to deliver renewable energy to over 1 million households in the northeastern US.

## Lease Area (OCS-A 0520)

Beacon Wind Lease Fast Facts:

**17 NM** southwest of Nantucket, MA

**52 NM** east of Montauk Point, NY

**128,000** total acres

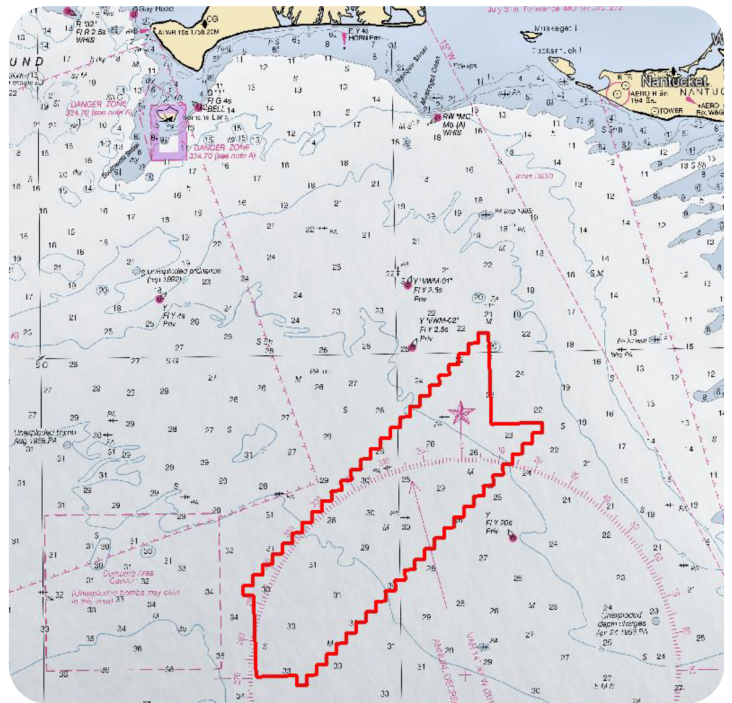
Potential generative capacity of the project is approximately **2.6 GW**

Potential to deliver renewable energy to over **1 million households** in the northeastern US

## General Coordinate Boundary:

41.020,-70.378 | 40.918,-70.294

40.648,-70.647 | 40.754,-70.721



**Calvin Alexander** – [calexander@searisksolutions.com](mailto:calexander@searisksolutions.com) | 908-967-2080

Calvin brings decades of fisheries experience to the bp offshore wind team as the Fisheries Liaison Officer, bringing extensive experience in fisheries stakeholder engagement and industry consultation across multiple marine projects. He previously served as a Field Scientist at NOAA working with commercial fishermen to acquire biological, oceanographic and environmental data as part of the study fleet program.



**Shawnda Pierre** – [shawnda.pierre@bp.com](mailto:shawnda.pierre@bp.com) | 973-380-7437

Shawnda joined the bp US offshore wind team in May 2022 as the Health and Safety Project Manager, advancing responsible offshore wind development through inclusive stakeholder engagement and rigorous health and safety stewardship. Shawnda leads fisheries engagement efforts, ensuring transparent communication between project teams and fishing communities.